



## EB15/50 Series



- 3-Phase EMI Power Line Filters 7 to 100A current rating
- Excellent Attenuation from 150KHz to 30MHz
- Easy connection Terminal Block, compact & light

### TECHNICAL DATA

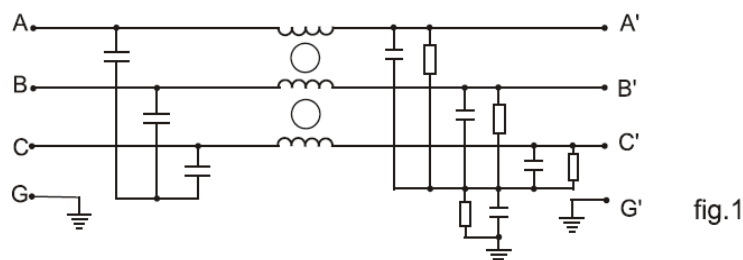
Rated Voltage	275/480 VAC
Operating Frequency	DC to 60Hz
Test Voltage (1 min)	1500 VDC (line – line) 2250 VDC (line – ground)
Climatic Category	40/085/21
Protection Category	IP 20

Model	Terminal Input   Output	Rated Current (A)	Ground Capacitance (nF)	Discharge Resistance (MΩ)	Circuit Diagram fig.	Dimension fig. See appendix P34
7EB 15/50	Terminal Block	7	1.75	33	1	2
10EB 15/50	Terminal Block	10	1.75	33	1	2
16EB 15/50	Terminal Block	16	1.75	33	1	2
30EB 15/50	Terminal Block	30	1.75	33	1	2
42EB 15/50	Terminal Block	42	1.75	33	1	2
55EB 15/50	Terminal Block	55	1.75	33	1	2
75EB 15/50	Terminal Block	75	1.75	33	1	2
100EB15/50	Terminal Block	100	2.60	71.5	1	2

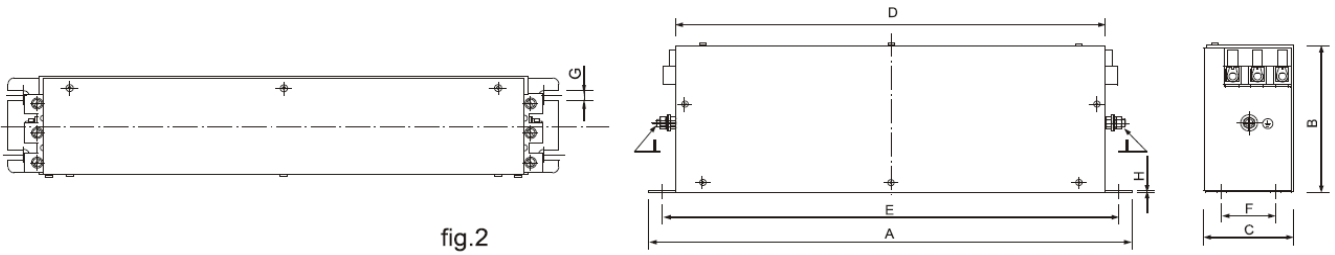
\* Max. leakage under normal circumstances.

Note – if two phases are interrupted, worst case leakage could reach 6-8 times higher levels.

### TYPICAL CIRCUIT DIAGRAM



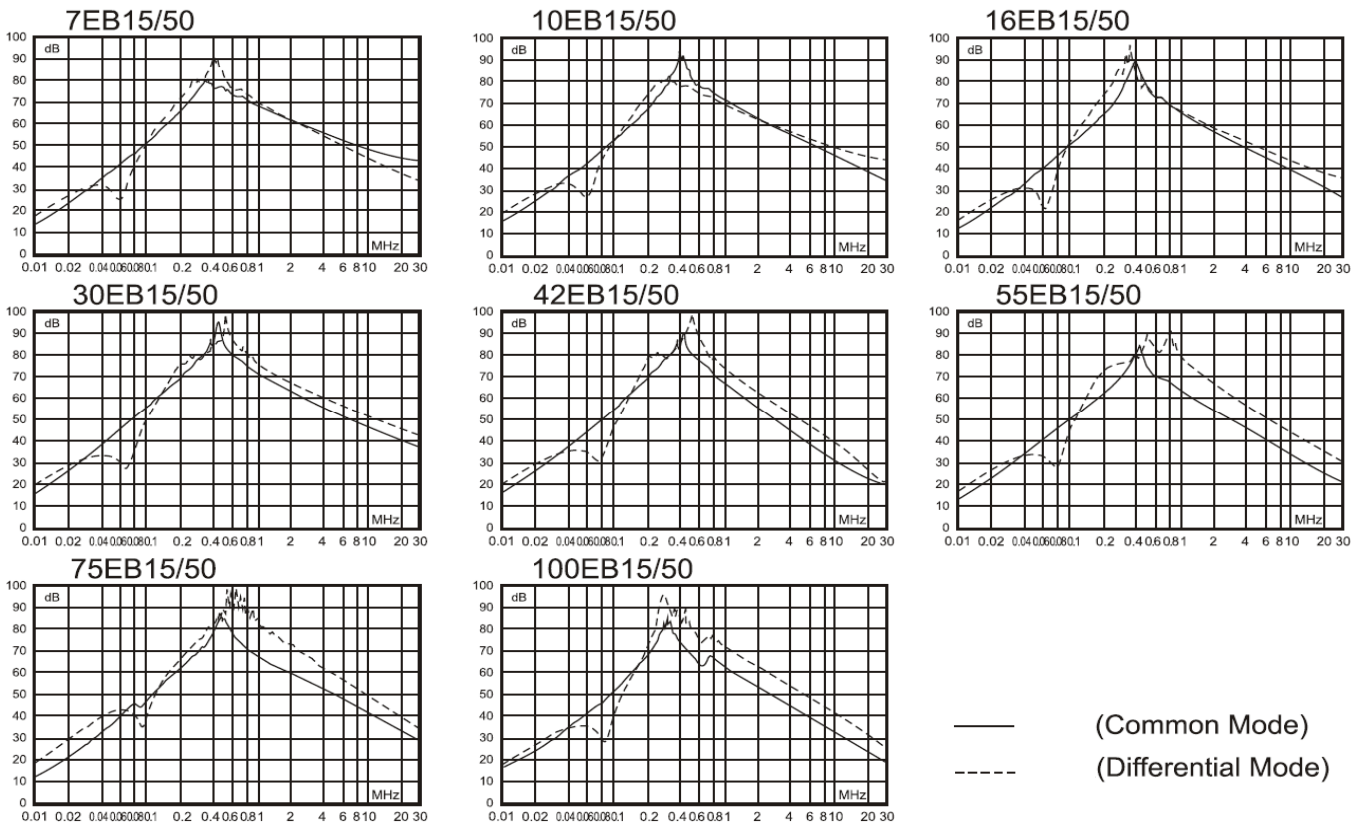
**OUTLINE DRAWING AND DIMENSIONS (mm)**



MODEL	A	B	C	D	E	F	G	H	I
DL-7EB 15/50	190	70	40	160	180	20	4.5	1	M5
DL-10EB 15/50	190	70	40	160	180	20	4.5	1	M5
DL-16EB 15/50	250	70	45	220	235	25	5.4	1	M5
DL-30EB 15/50	270	85	50	240	255	30	5.4	1	M6
DL-42EB 15/50	310	85	50	280	295	30	5.4	1	M6
DL-55EB 15/50	250	90	80	220	235	60	5.4	1.5	M6
DL-75EB 15/50	270	135	80	240	255	60	6.5	1.5	M6
DL-100EB 15/50	270	150	90	240	255	65	6.5	1.5	M10

**INSERTION LOSS**

(50Ω, IEC/CISPR No 17, Measured in 50Ω system, as IEC/CISPR No. 17)



— (Common Mode)  
 - - - (Differential Mode)