



EA, EAX Series



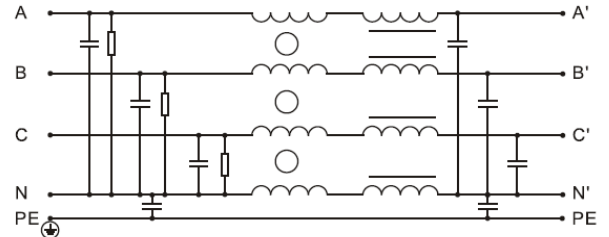
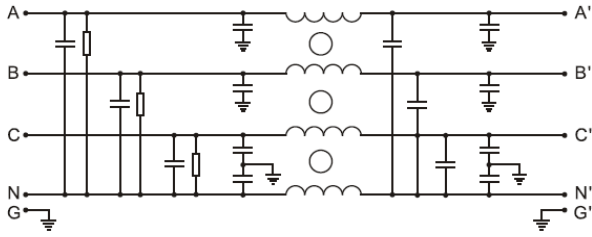
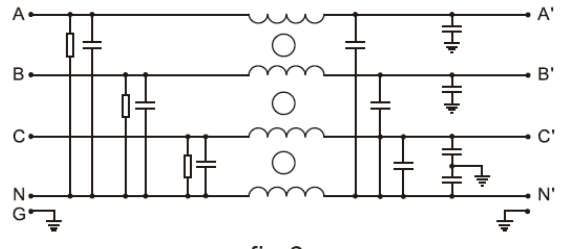
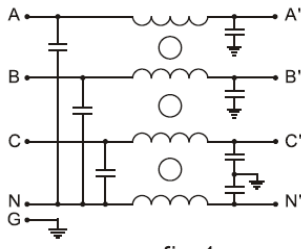
- Compact unit, general purpose
- Effective for both balanced and unbalanced three phase loads

TECHNICAL DATA

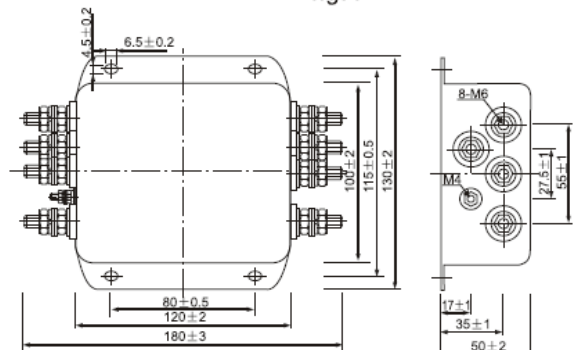
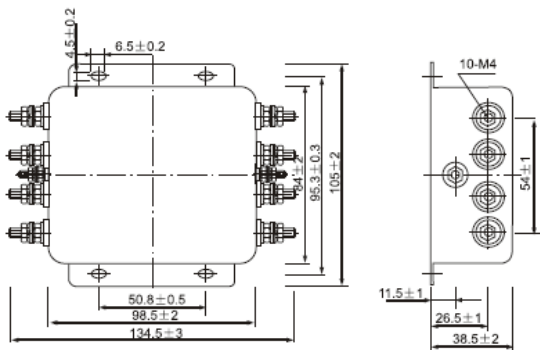
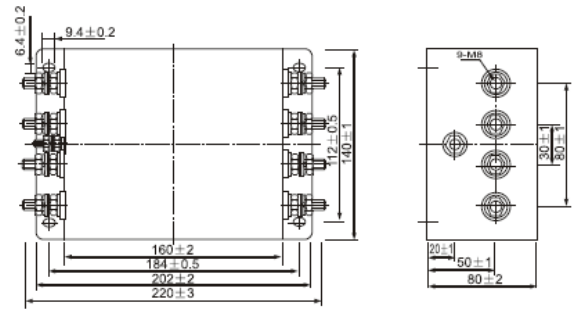
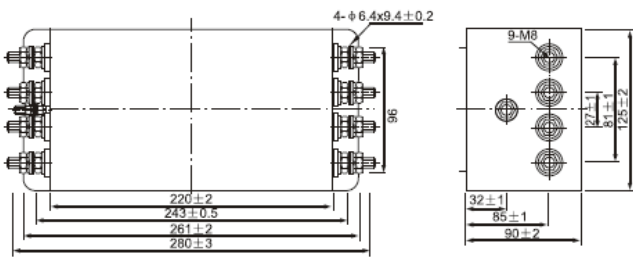
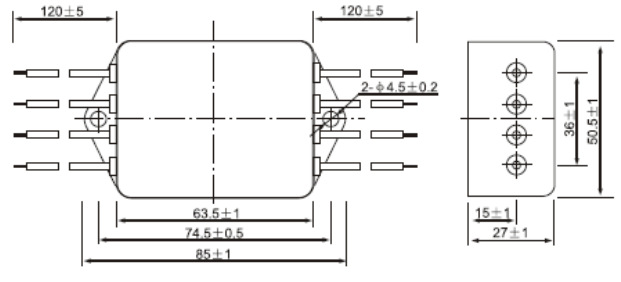
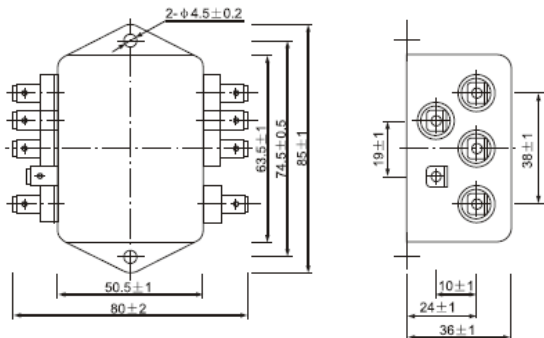
Rated Voltage	250/440 VAC
Operating Frequency	50/60Hz
Rated Current	5A-600A
Test Voltage	1500 VDC (line – line) 2250 VDC (line – ground)
Climatic Category	25/085/21

Model	Terminal		Rated Current (A)	Ground Capacitance (nF)	Discharge Resistance (MΩ)	Circuit Diagram fig.	Dimension fig.
	Input	Output					
DL-5EA	Spade Terminal		5	6.8		1	1
DL-10EA	Spade Terminal		10	6.8		1	1
DL-5EAX1	Wire		5	6.8		1	2
DL-10EAX1	Wire		10	6.8		1	2
DL-15EA3	Threaded Stud		15	6.8		2	5
DL-20EA3	Threaded Stud		20	6.8		2	5
DL-25EA3	Threaded Stud		25	6.8		2	5
DL-30EA3	Threaded Stud		30	6.8		2	5
DL-40EA3	Threaded Stud		40	10	1	2	6
DL-50EA3	Threaded Stud		50	10	1	2	6
DL-80EA1	Threaded Stud		80	10	0.68	2	3
DL-100EA1	Threaded Stud		100	13.6	0.44	2	4
DL-150EA1	Threaded Stud		150	200	0.44	2	3
DL-200EA5	Threaded Stud		200	200	0.68	3	3
DL-300EA5/60	Rectangular Post		300	690	0.68	4	7
DL-600EA5/60	Rectangular Post		600	690	0.68	4	8

TYPICAL CIRCUIT DIAGRAM



OUTLINE DRAWING AND DIMENSIONS (mm)



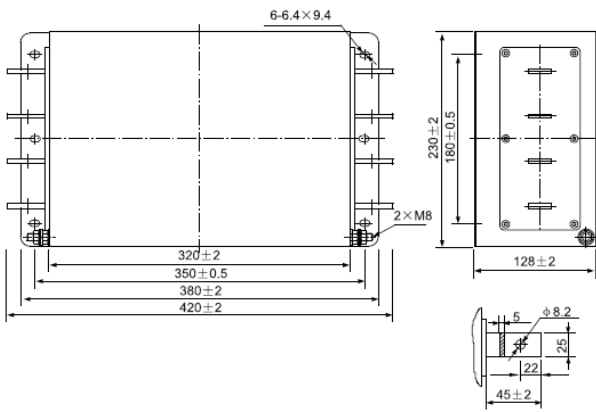


fig.7

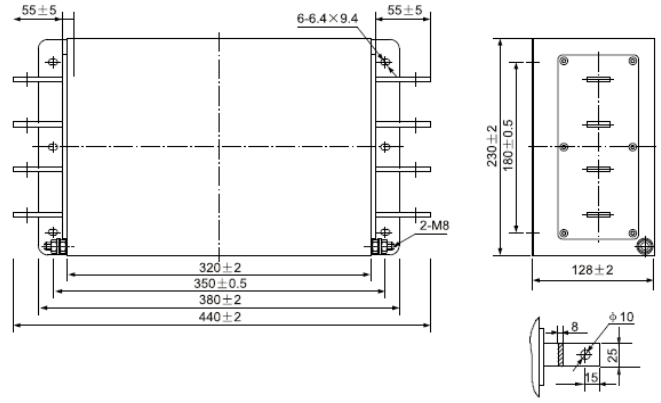


fig.8

INSERTION LOSS

(50Ω, IEC/CISPR No 17, Measured in 50Ω system, as IEC/CISPR No. 17)

