



## K Series



- High performance filters
- Good common mode and differential mode suppression

### TECHNICAL DATA

Rated Voltage	120/250VAC
Operating Frequency	50/60Hz
Rated Current	3A-100A
Test Voltage (1min)	1500VDC (line – line) 1500VAC (line – ground)
Climatic category	25/085/21

Model	Terminal		Rated Current (A)	Ground Capacitance (nF)	Leakage Current ≤ (mA)	Discharge Resistance (MΩ)	Circuit Diagram fig.	Dimension fig.
	Input	Output						
DL-3K1	Spade Terminal		3	9.4	1.5	1.5	1	A3
DL-6K1	Spade Terminal		6	9.4	1.5	1.5	1	A3
DL-10K1	Spade Terminal		10	9.4	1.5	1.5	1	A3
DL-12K1	Spade Terminal		12	9.4	1.5	1.0	2	A6
DL-15K1	Threaded Stud		15	13.3	1.5	1.5	1	G2
DL-20K3	Threaded Stud		20	9.4	1.5	1.5	1	E1
DL-30K3	Threaded Stud		30	9.4	1.5	1.5	1	E1
DL-40K3	Threaded Stud		40	9.4	1.5	1.5	1	E2
DL-50KS	Threaded Stud		50	9.4	1.5	1.5	1	E4
DL-80K11	Threaded Stud		80	40	5	0.68	2	G6
DL-100K1	Threaded Stud		100	40	5	0.68	2	G6

**TYPICAL CIRCUIT DIAGRAM**

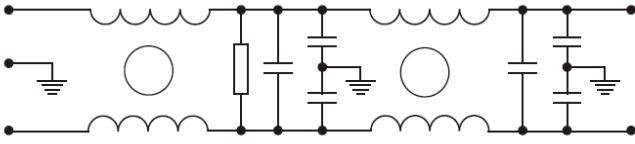


fig.1

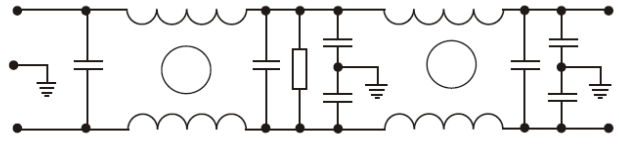
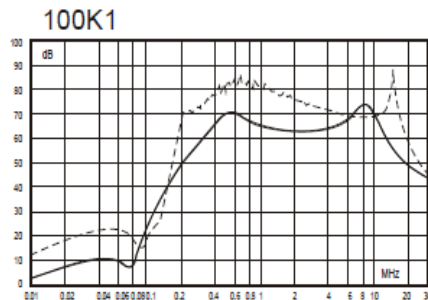
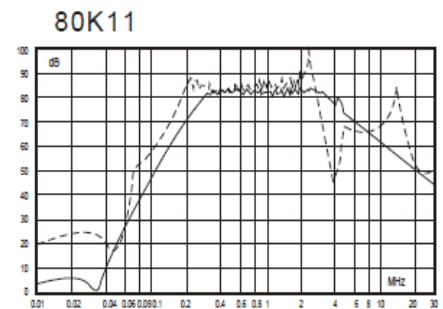
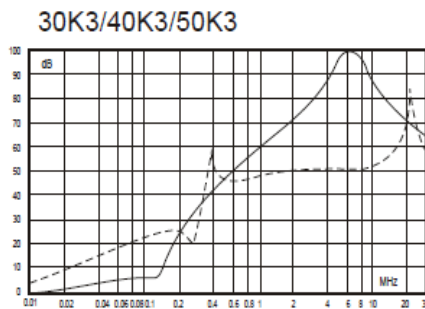
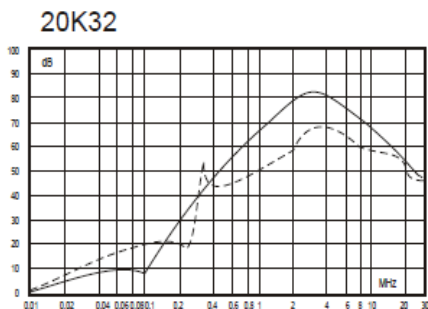
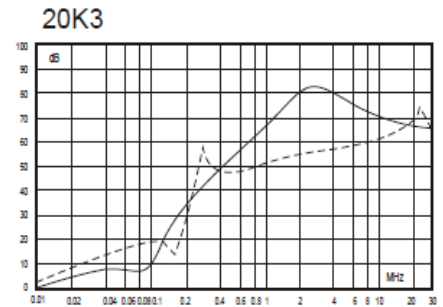
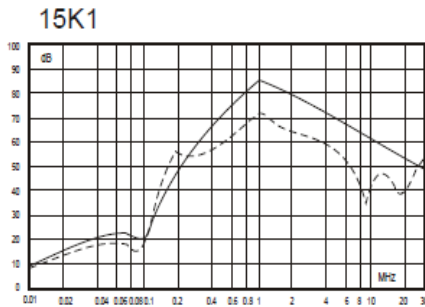
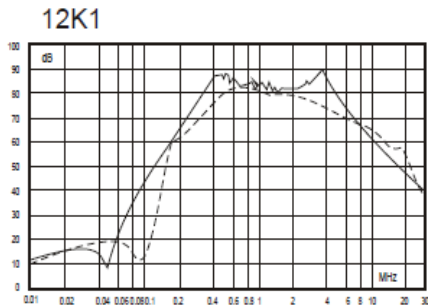
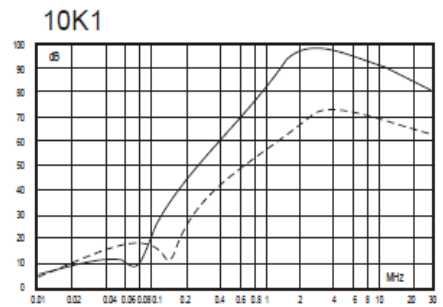
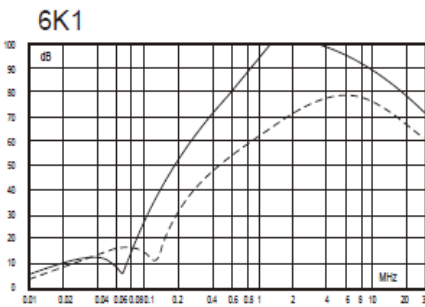
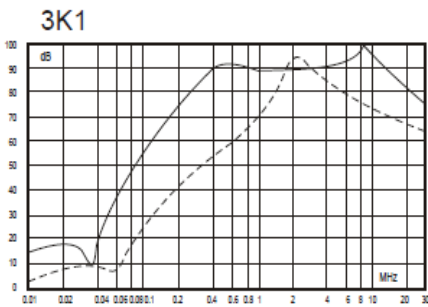


fig.2

**INSERTION LOSS**

(50Ω, IEC/CISPR No 17, Measured in 50Ω system, as IEC/CISPR No. 17)



—— (Common Mode)  
 - - - - (Differential Mode)