



FPC, FPQ Series



- PCB Mounting, FPQ Connector
- Compact Unit
- Modular Power Supplies & Mimi-Electronic Instruments (DC SIDE)

TECHNICAL DATA

Rated Voltage	80 VAC
Rated Current	1A-60A
Test Voltage (1min)	500 VDC (line – ground)
Climatic Category	25/085/21

Model	Terminal		Rated Current (A)	Ground Capacitance (nF)	Leakage Current \leq (mA)	Discharge Resistance (M Ω)	Circuit Diagram fig.	Dimension fig.
	Input	Output						
DL-2F[C	PCB Pin		2	2.2	-		1	H2
DL-3FP3	PCB Pin		3	33	-		2	H6
DL-5FPC2	PCB Pin		5	4.7	-		3	H7
DL-6FPC	PCB Pin		6	22	-		1	H8
DL-10FPC	PCB Pin		10	33	-		2	H9
DL-10FPC4	PCB Pin		10	4.7	-		4	H10
DL-15FPC1	PCB Pin		15	4.7	-		4	H11
DL-20FPC1	PCB Pin		20	220	-		2	H12
DL-30FPC1	PCB Pin		30	220	-		2	H13
DL-40FPC1	PCB Pin		40	220	-		2	H14
DL-60FPC	PCB Pin		60	3300	-		2	H15
DL-10FPQ	IEC Socket	PCB Pin	10	100	-		2	H16
DL-20FPQ	IEC Socket	PCB Pin	20	100	-		2	H16
DL-50FPQ	IEC Socket	PCB Pin	50	220	-		5	H17

TYPICAL CIRCUIT DIAGRAM

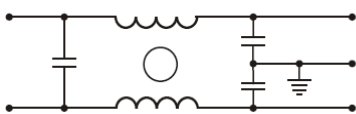


fig. 1

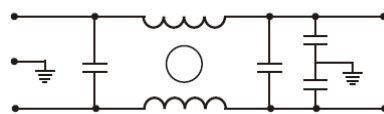


fig. 2

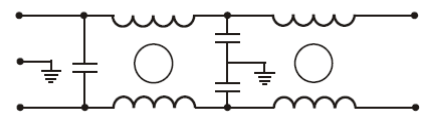


fig. 3

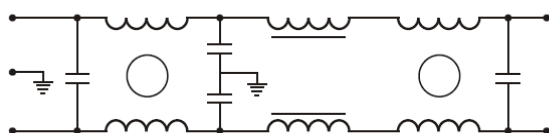


fig. 4

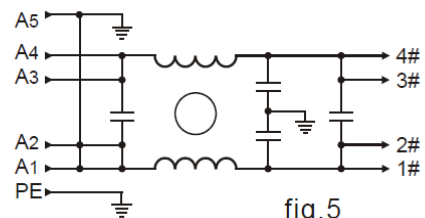
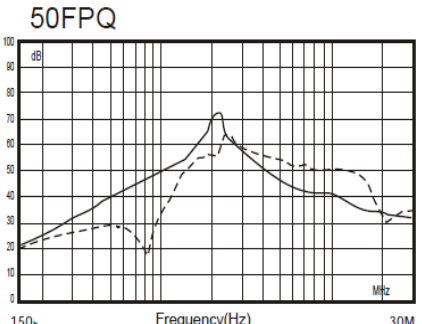
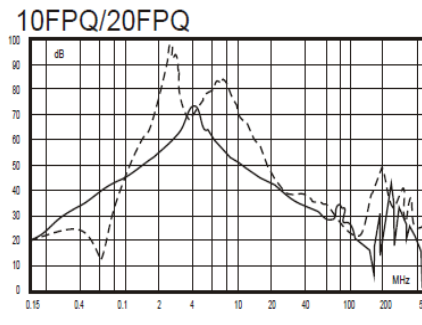
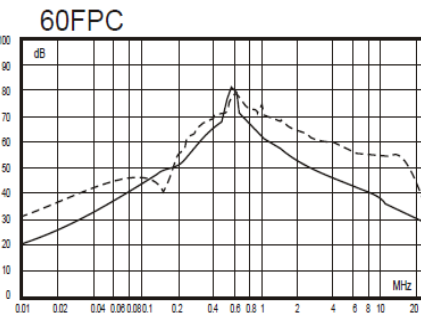
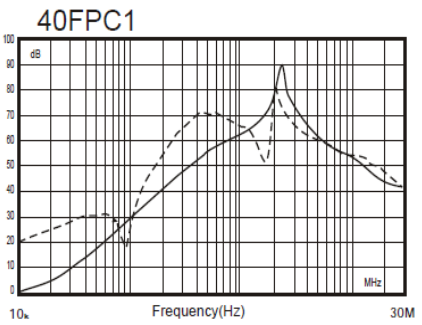
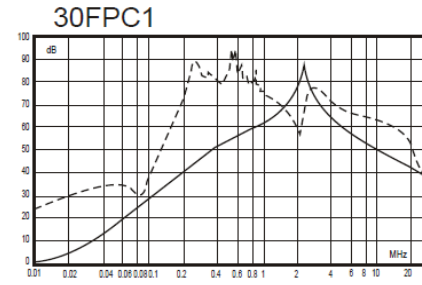
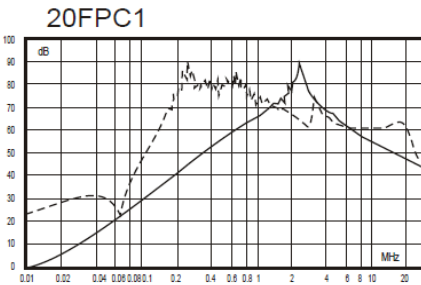
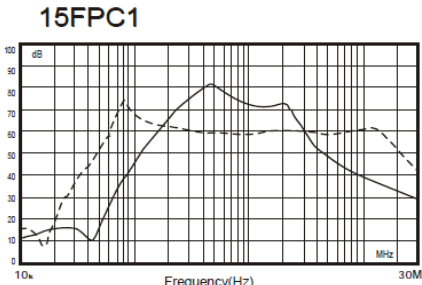
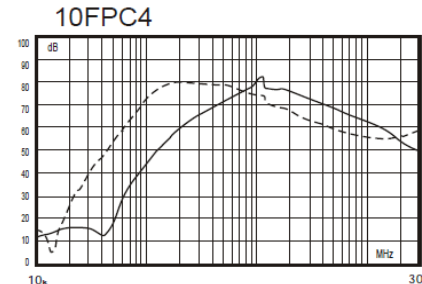
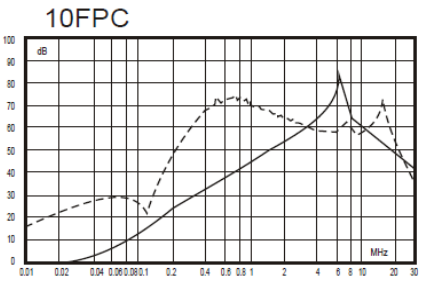
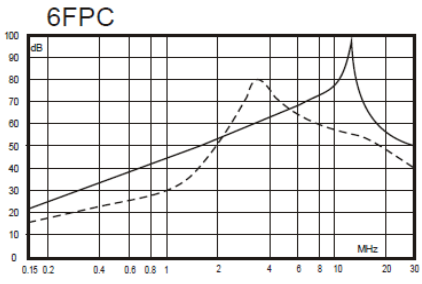
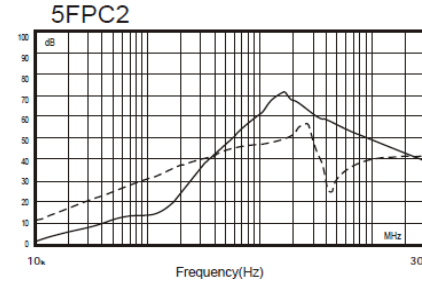
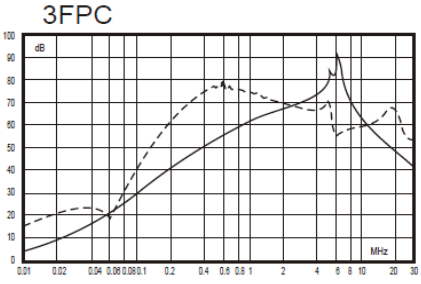
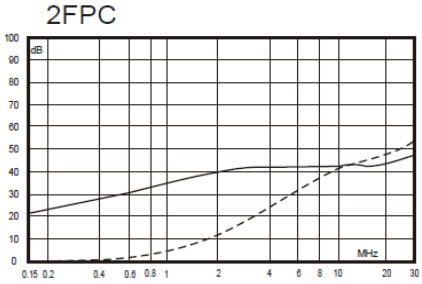


fig. 5

INSERTION LOSS

(50Ω, IEC/CISPR No 17, Measured in 50Ω system, as IEC/CISPR No. 17)



— (Common Mode)
 - - - (Differential Mode)