



## FK Series



- High performance filters
- Good performance of common mode and differential mode interference suppression

### TECHNICAL DATA

Rated Voltage 80 VDC

Rated Current 10A-60A

Test Voltage (1min) 350 VDC (line – line)  
1414 VAC (line – ground)

Climatic category 25/085/21

Model	Terminal		Rated Current (A)	Ground Capacitance (nF)	Leakage Current ≤ (mA)	Discharge Resistance (MΩ)	Circuit Diagram fig.	Dimension fig.
	Input	Output						
DL-10FK1	Threaded Stud		10	44	-		1	D1
DL-20FK1	Threaded Stud		20	44	-		1	D2
DL-30FK1	Threaded Stud		30	44	-		1	F1
DL-50FK1	Threaded Stud		50	440	-		1	F2
DL-50FK11	Threaded Stud		50	440	-		1	G1
DL-60FK1	Threaded Stud		50	440	-		1	F2

**TYPICAL CIRCUIT DIAGRAM**

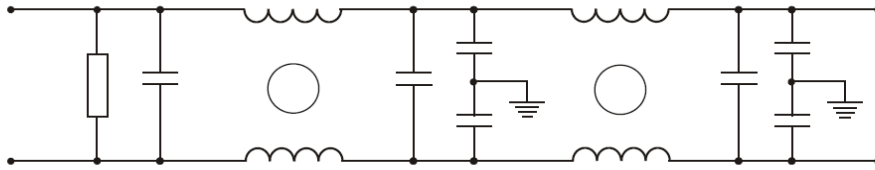
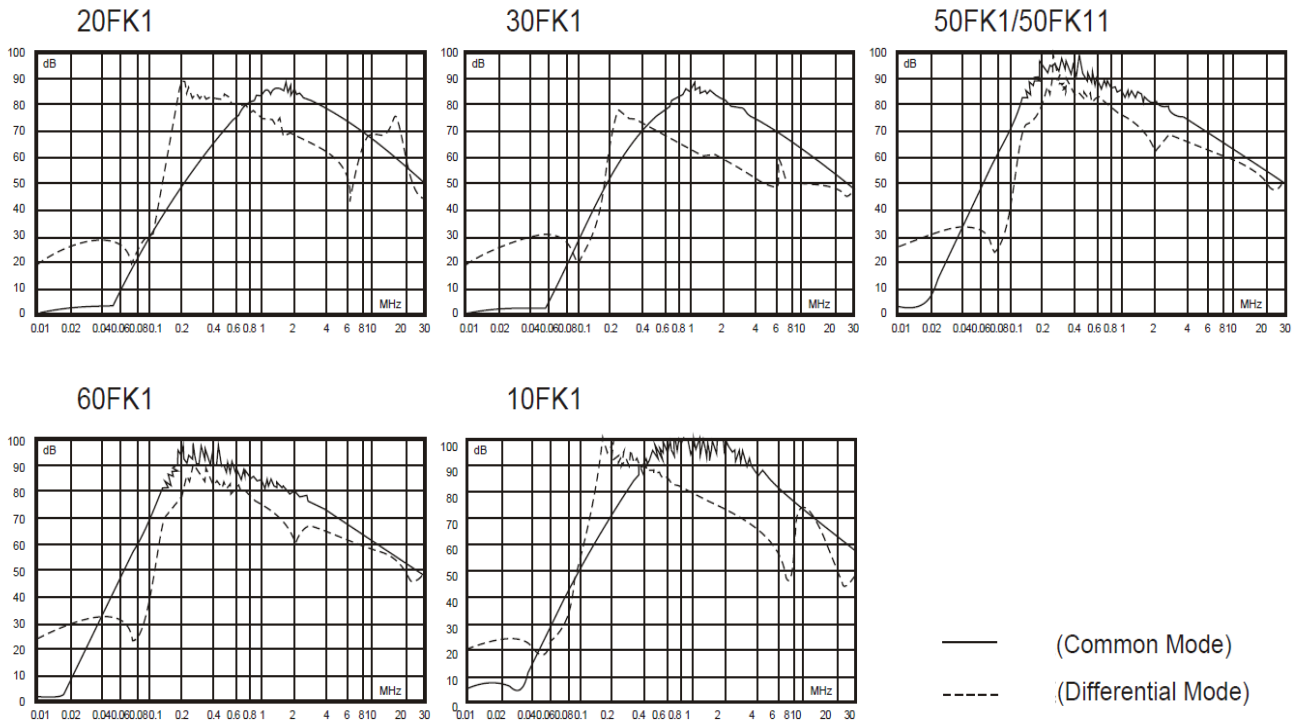


fig. 1

**INSERTION LOSS**

(50Ω, IEC/CISPR No 17, Measured in 50Ω system, as IEC/CISPR No. 17)



— (Common Mode)  
 - - - (Differential Mode)