



Signal Line Filters

RF Shielded Enclosure, Faraday Cage, RF Shielded Room

Model	Voltage	Current	Impedance Ω / L-L	Lines	Bandwidth	Figure	Application
CES-XL-56KB-100	200 VDC	1 A	100	2	56 kB	1	Analog signal, switching signal
CES-XL-56KB-600	200 VDC	1 A	600	2	56 kB		
CES-XL-20KB-5000	30 VDC	0.006 A	5000	2	20 kB		
CES-XL-4-8	30 VDC	2 A	8	2	4 kB		
CES-XL-3	250 VDC	0.3 A	600	2	0 - 3.4 kHz		
CES-XL-8	250 VDC	0.3 A	600	2	0 - 7 kHz		
CES-XL-384	250 VDC	0.3 A	600	2	0 - 384 kHz		
CES-XL-4-16	30 VDC	2 A	16	2	4 kB		
CES-XL-4-100	125 VDC	1 A	100	2	4 kB		
CES-XL-4-140	125 VDC	0.5 A	140	2	4 kB		
CES-XL-4-200	125 VDC	0.5 A	200	2	4 kB		
CES-XL-4-300	125 VDC	1 A	300	2	4 kB		
CES-XL-4-5000	125 VDC	0.025 A	5000	2	4 kB		
CES-XL-1-100	250 VDC	1 A	100	2	1 kB		
CES-XL-1-40	250 VDC	3 A	40	2	1 kB		
CES-XL-1-20	250 VDC	5 A	20	2	1 kB		

Model	Voltage	Current	Lines	Bandwidth	Figure	Application
CES-XL-K2	250 VAC	2 A	2	100 kHz	2	AC/DC switching signal, air-con signal, voice, door access control
CES-XL-K6	250 VAC	2 A	6	100 kHz	6	
CES-XL-K12	250 VAC	2 A	12	100 kHz	7	
CES-XL-K16	250 VAC	2 A	16	100 kHz	8	
CES-XL-K20	250 VAC	2 A	20	100 kHz	9	
CES-XL-20K	250 VDC	0.3 A	2	20 kHz	2	Telephone, fax and DC switching signal
CES-XL-V1	100 VDC	1 A	1	6 MHz	3	Video system control
CES-XL-V2-1-M	100 VDC	1 A	2	6 MHz	4	Emergency telephone, Fire alarm, monitor, door access control
CES-XL-V4-1-M	100 VDC	1 A	4	6 MHz	4	
CES-XL-V8	100 VDC	0.1 A	8	100 MB/s	5	Network data < 100 MB/s

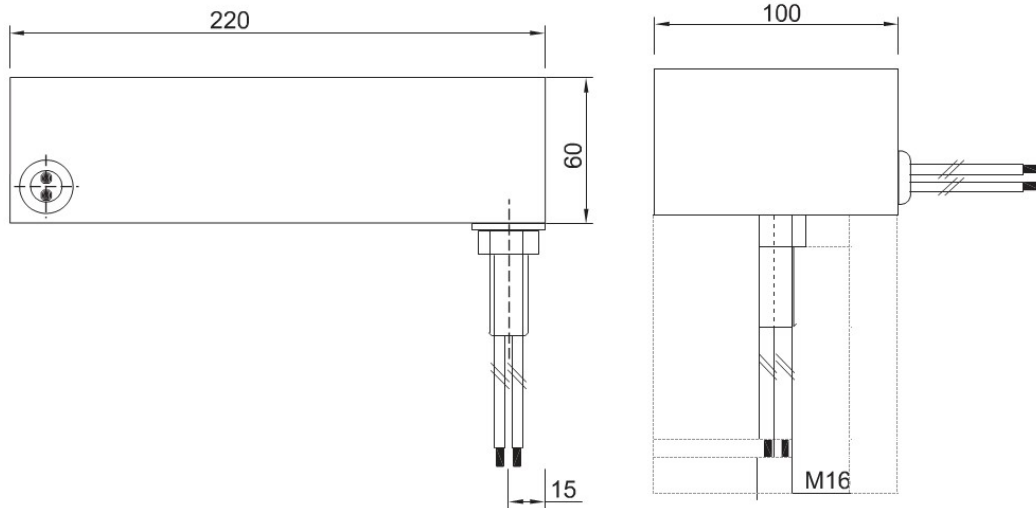


Figure 1.

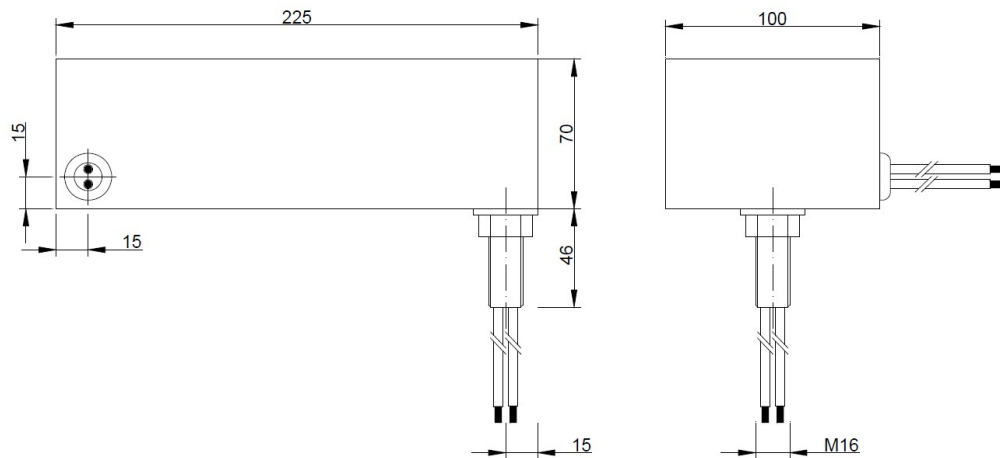


Figure 2.

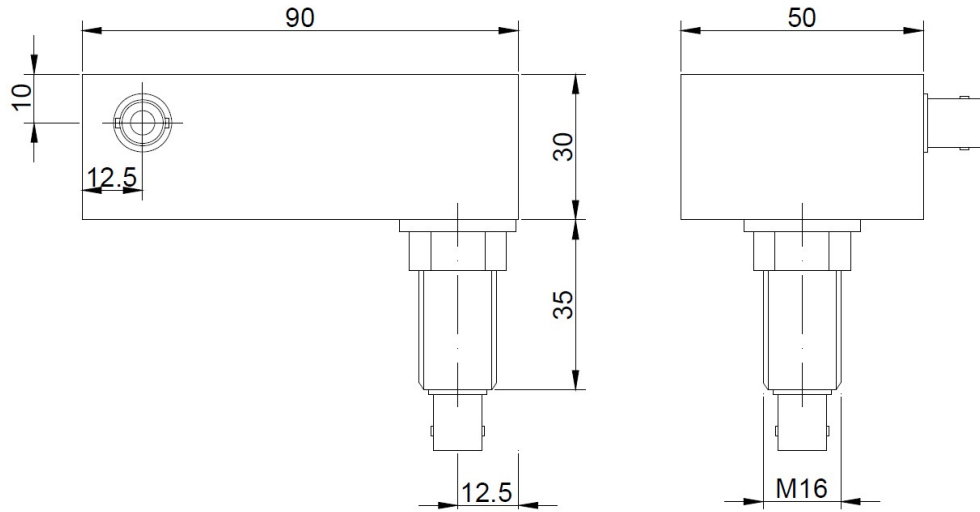


Figure 3.

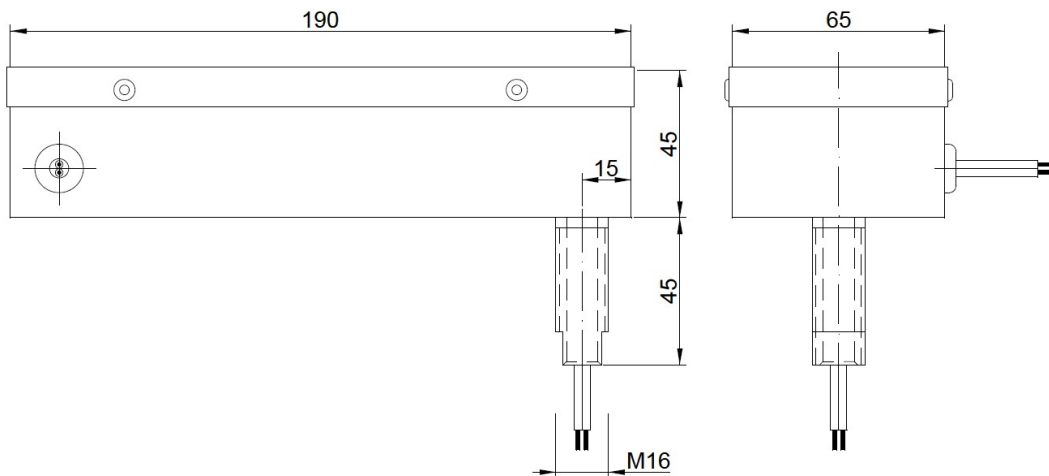


Figure 4.

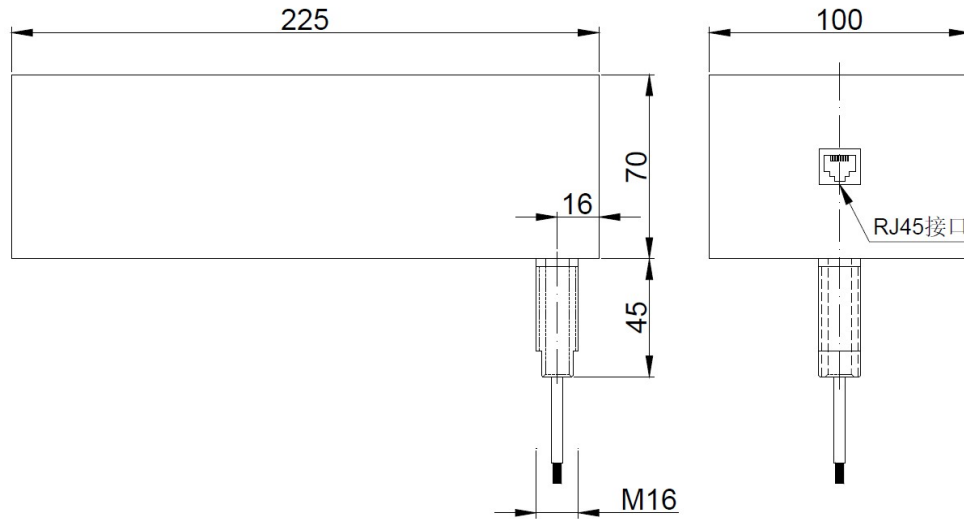


Figure 5.

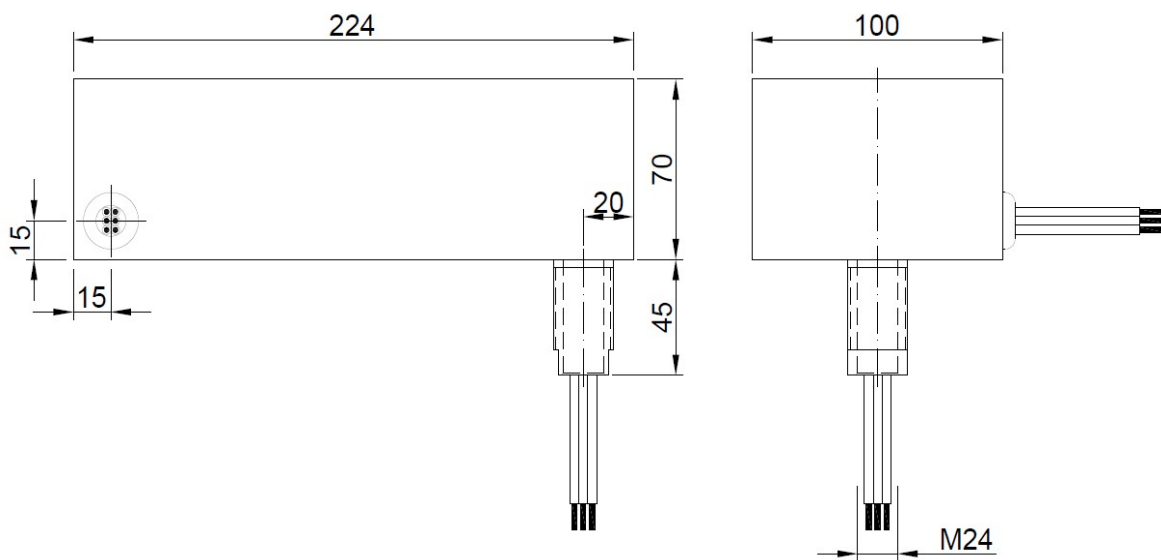


Figure 6.

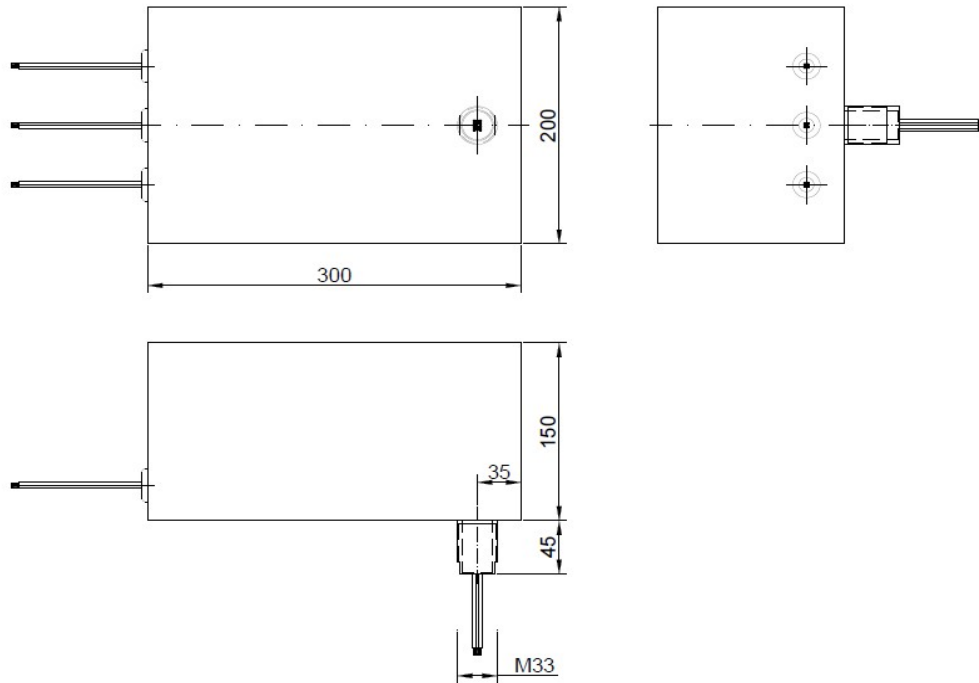


Figure 7.

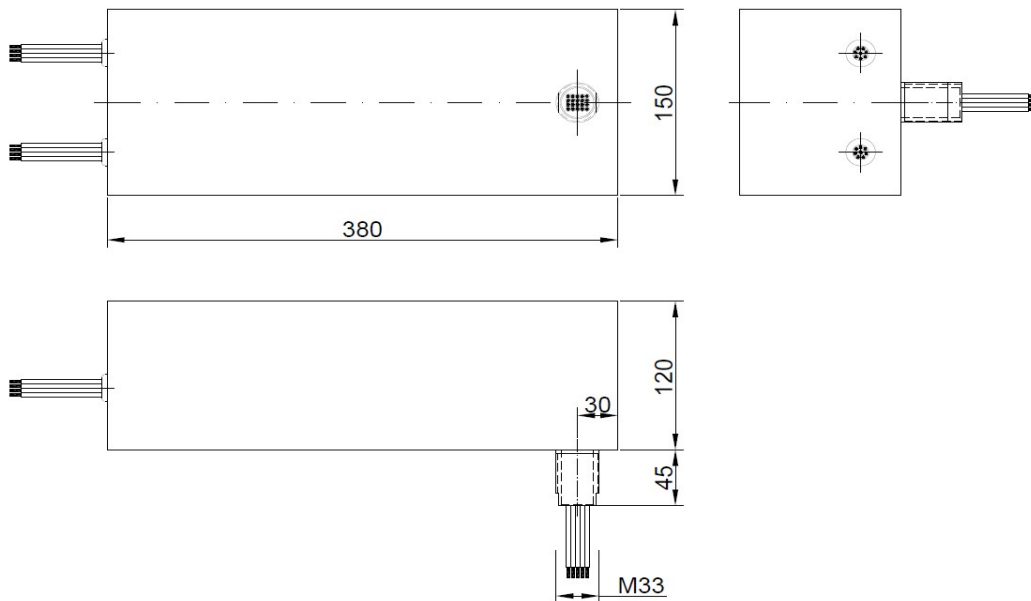


Figure 8.



COMPLIANCE ENGINEERING

EMC Product Safety Environmental Shielding

90 Indian Drive
Keysborough VIC 3173 Australia
Telephone: + 61 3 9763 3079
Email: info@compeng.com.au
Web: www.compeng.com.au
ABN: 56 101 639 588

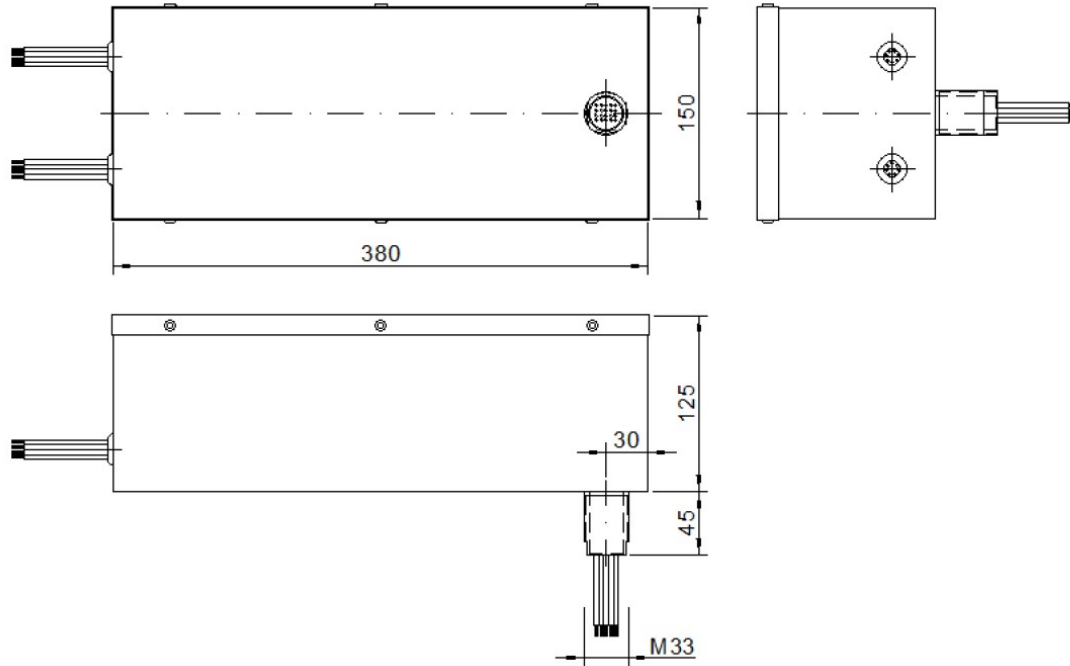


Figure 9.