



TH Series



- High performance filters with differential mode choke
- Low leakage current

TECHNICAL DATA

| | |
|---------------------|--|
| Rated Voltage | 120/250VAC |
| Operating Frequency | 50/60Hz |
| Rated Current | 1A-100A |
| Test Voltage (1min) | 1500VDC (line – line) 1500VAC (line – ground) |
| Climatic category | 25/085/21 |

| Model | Terminal | | Rated Current (A) | Ground Capacitance (nF) | Leakage Current ≤ (mA) | Discharge Resistance (MΩ) | Circuit Diagram fig. | Dimension fig. |
|-----------|----------------|--------|-------------------|-------------------------|------------------------|---------------------------|----------------------|----------------|
| | Input | Output | | | | | | |
| DL-1TH1 | Spade Terminal | | 1 | 3.3 | 0.5 | 1 | 1 | A3 |
| DL-6TH1 | Spade Terminal | | 6 | 3.3 | 0.5 | 1 | 1 | A6 |
| DL-10TH3 | Threaded Stud | | 10 | 3.3 | 0.5 | 1 | 1 | E1 |
| DL-15TH1 | Threaded Stud | | 15 | 3.3 | 0.5 | 1 | 23 | G3 |
| DL-20TH1 | Threaded Stud | | 20 | 3.3 | 0.5 | 1 | 2 | G3 |
| DL-30TH1 | Threaded Stud | | 30 | 3.3 | 0.5 | 1 | 2 | G3 |
| DL-40TH1 | Threaded Stud | | 40 | 5.0 | 0.8 | 0.68 | 2 | G5 |
| DL-100TH1 | Threaded Stud | | 100 | 6.8 | 1.0 | 1 | 2 | G6 |

TYPICAL CIRCUIT DIAGRAM

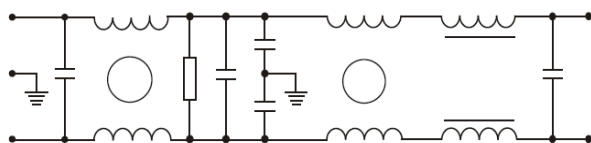


fig.1

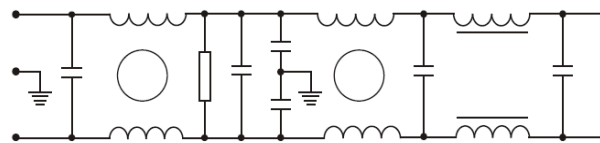
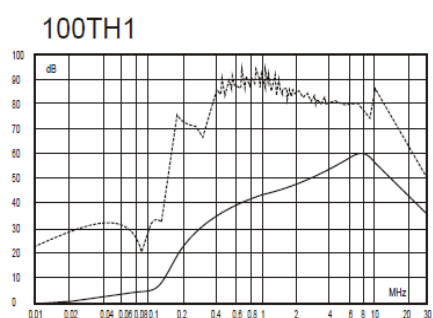
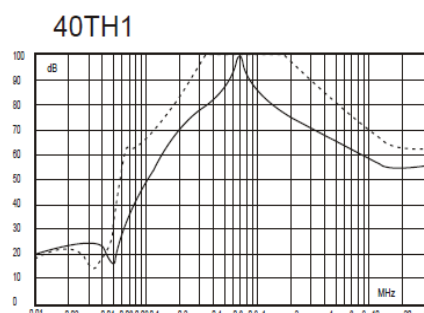
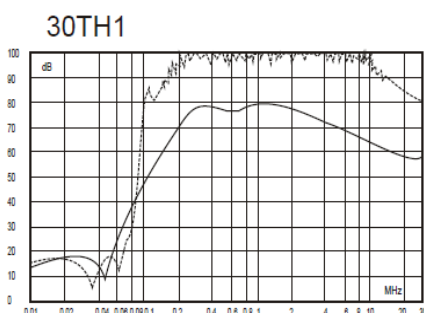
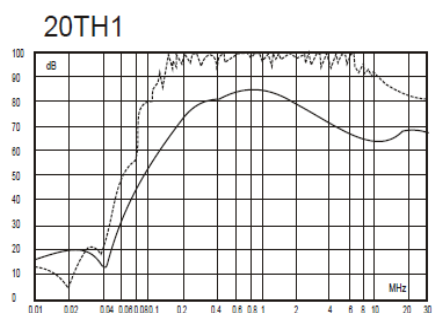
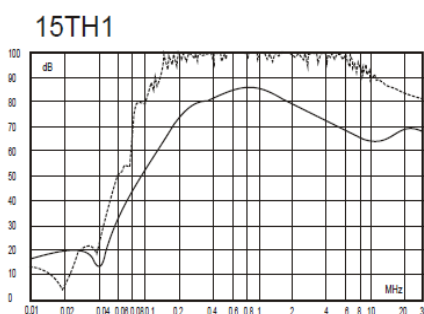
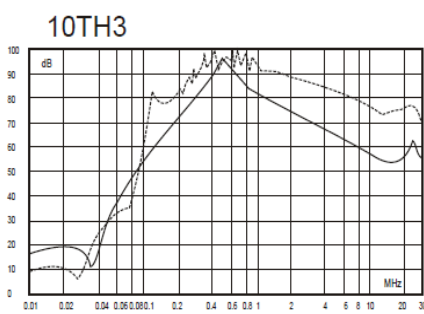
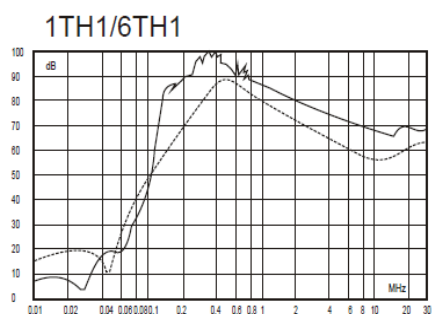


fig.2

INSERTION LOSS

(50Ω, IEC/CISPR No 17, Measured in 50Ω system, as IEC/CISPR No. 17)



— (Common Mode)
 - - - (Differential Mode)