



PC Series



- PCB Mounting
- Compact Unit

Modular Power Supplies & Mini-Electronic Instruments

TECHNICAL DATA

Rated Voltage	250 VAC
Operating Frequency	50-60Hz
Rated Current	1A-16A
Test Voltage (1min)	1500 VDC (line – line) 1500 VAC (line – ground)
Climatic Category	25/085/21

Model	Terminal		Rated Current (A)	Ground Capacitance (nF)	Leakage Current ≤ (mA)	Discharge Resistance (MΩ)	Circuit Diagram fig.	Dimension fig.
	Input	Output						
DL-1PC	PCB Pin		1	2.2	0.5		1	H1
DL-2PC	PCB Pin		2	2.2	0.5		1	H2
DL-3PC	PCB Pin		3	2.2	0.5		1	H2
DL-6PC	PCB Pin		6	3.3	0.5		1	H2
DL-6PC2	PCB Pin		6	3.3	0.5		1	H3
DL-3PC2	PCB Pin		3	4.7	0.8	1.5	2	H4
DL-3PC4	PCB Pin		3	2.2	0.5		3	H4
DL-16PC	PCB Pin		16	2.2	0.5	1	4	H5

TYPICAL CIRCUIT DIAGRAM

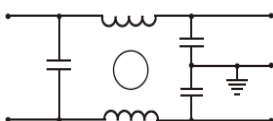


fig.1

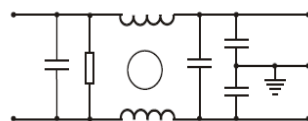


fig.2

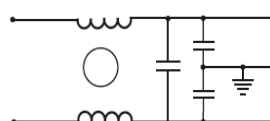


fig.3

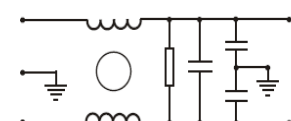
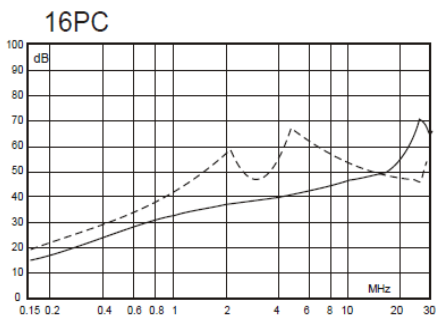
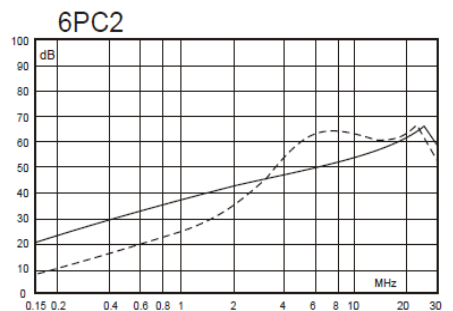
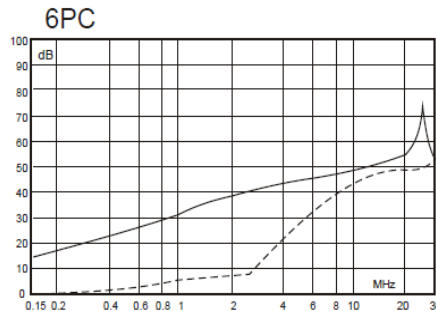
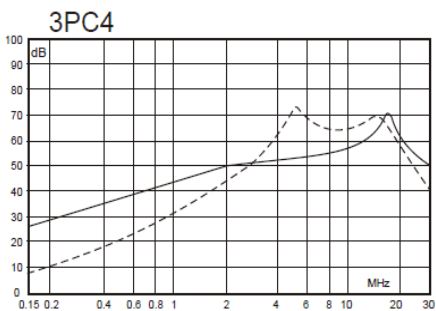
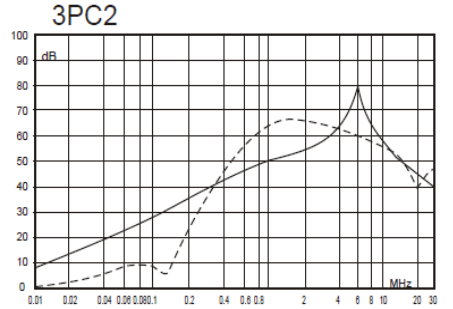
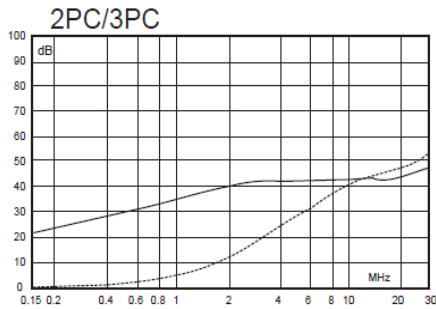
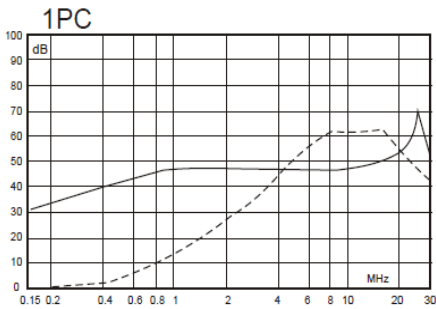


fig.4

INSERTION LOSS

(50Ω, IEC/CISPR No 17, Measured in 50Ω system, as IEC/CISPR No. 17)



—— (Common Mode)
 - - - (Differential Mode)