



## DH Series



- With differential mode choke stage

### TECHNICAL DATA

Rated Voltage	240VAC
Operating Frequency	50/60Hz
Rated Current	1A-1000A
Test Voltage (1min)	1500VDC (line – line) 1500VAC/2250VDC (line – ground)
Climatic category	25/085/21

Model	Terminal		Rated Current (A)	Ground Capacitance (nF)	Leakage Current ≤ (mA)	Discharge Resistance (MΩ)	Circuit Diagram fig.	Dimension fig.
	Input	Output						
DL-1DH1	Spade Terminal		1	4.7	0.8	0.44	1	A3
DL-3DH1	Spade Terminal		3	4.7	0.8	0.44	1	A6
DL-6DH12	Spade Terminal		6	4.7	0.8	1	2	A6
DL-10DH12	Spade Terminal		10	4.7	0.8	1	3	A5
DL-16DH1	Spade Terminal		16	4.7	0.8	1	2	C1
DL-16DH11	Spade Terminal		16	1	1.7	1	2	C2
DL-20DH1	Threaded Stud		20	4.7	0.8	1	1	D3
DL-35DH1	Threaded Stud		35	3.3	0.5	1	1	F5
DL-200DH1/10	Threaded Stud		200	44	10	0.68	4	G4
DL-300DH1/10	Threaded Stud		250	44	10	0.68	4	G4
DL-450DH1/60	Terminal		450	220	20	0.68	4	J1
DL-600DH1/60	Terminal		600	220	20	0.68	4	J1
DL-750DH1/60	Terminal		750	220	20	0.68	4	J2
DL-1000DH1/60	Terminal		1000	220	20	0.68	4	J2

**TYPICAL CIRCUIT DIAGRAM**

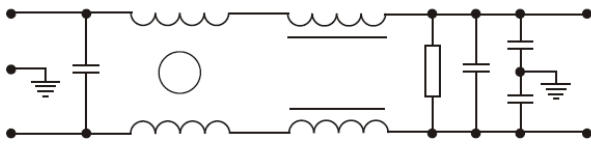


fig.1

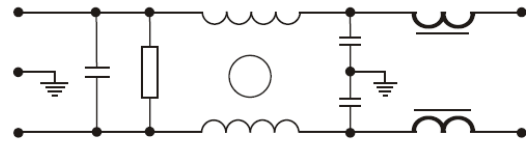


fig.2

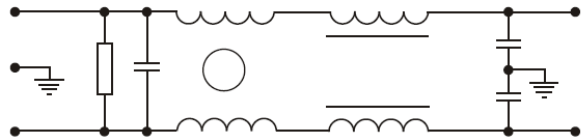


fig.3

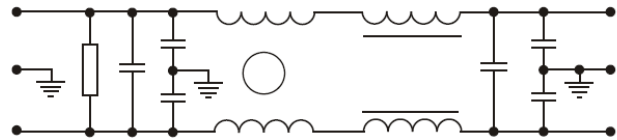


fig.4

**INSERTION LOSS**

(50Ω, IEC/CISPR No 17, Measured in 50Ω system, as IEC/CISPR No. 17)

