



**COMPLIANCE
ENGINEERING**
EMC - Shielding - Environmental

90 Indian Drive
Keysborough VIC 3173 Australia
Telephone: + 61 3 9763 3079
Email: info@compeng.com.au
Web: www.compeng.com.au
ABN: 56 101 639 588

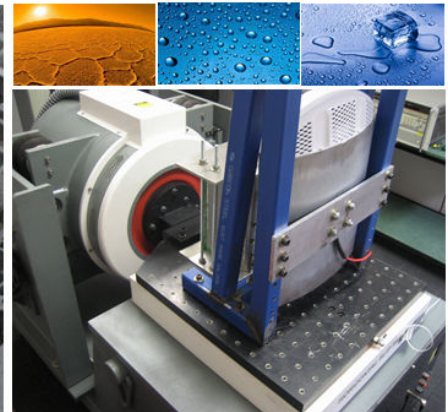
EMC Testing

Accredited EMC testing services.



Environmental Testing

Accredited testing services for harsh environments.



EMC Compliance & Environmental testing

Compliance Engineering has developed an advanced test laboratory with an extensive range of capabilities to service customers throughout Australia.

Our EMC and testing facilities cater to a broad range of certification requirements including environmental, vibration, shock, temperature, ingress (IP) and impact (IK). Many of the services performed are included in our scope of internationally accredited testing services through A2LA (ILAC), which is accepted by NATA as equivalent.

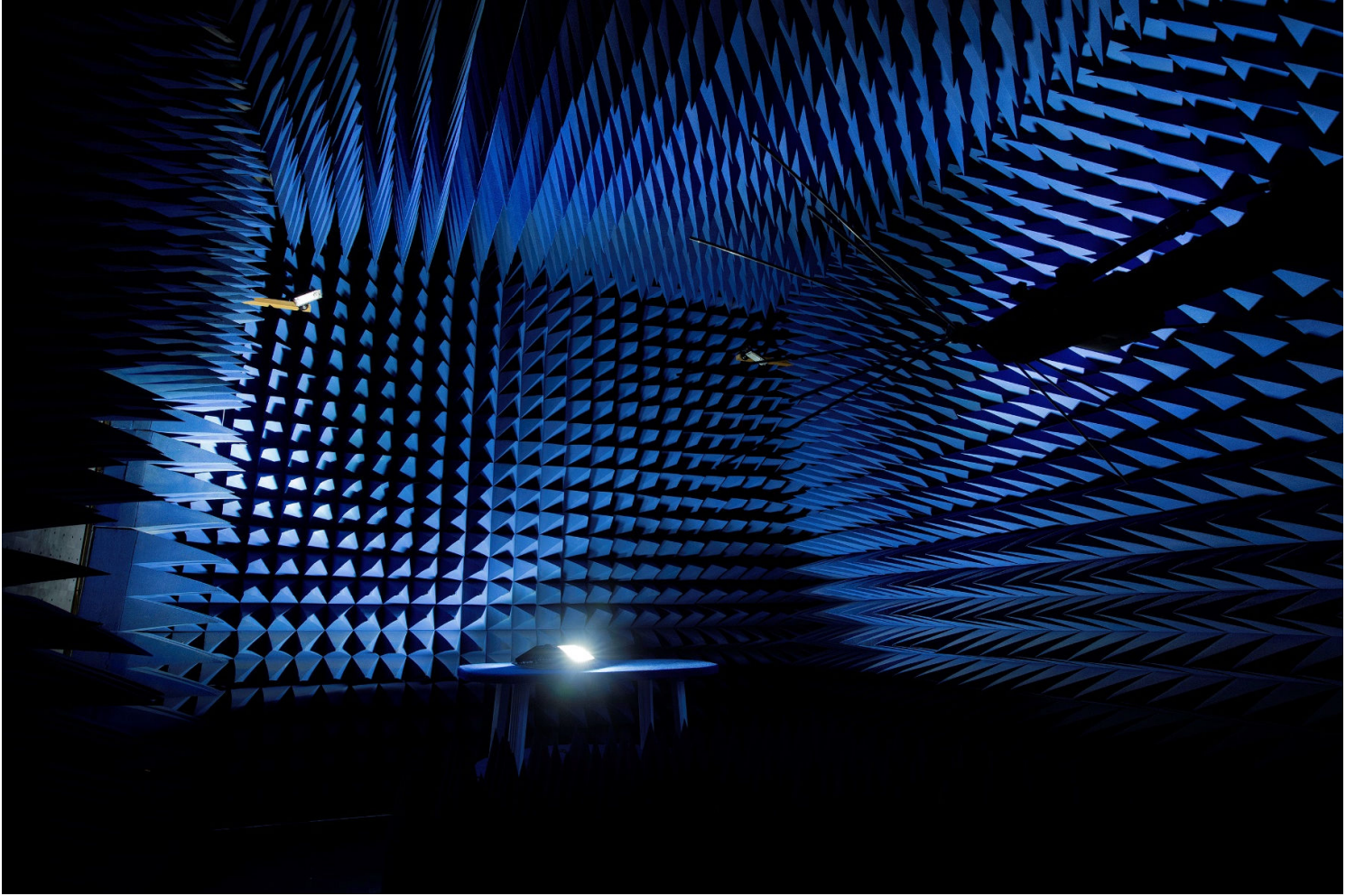
Compliance Engineering is the only manufacturer in Australia of modular RF shielded enclosures. The RF shielding services include new installations, relocation and servicing of existing RF enclosures, shielding effectiveness testing. In addition, we offer a comprehensive range of RF shielded enclosure components such as RF power filters, EMC gaskets, RF waveguides, honeycomb air vents, RF absorbing materials, etc. Compliance Engineering also provide and install EMF shielding for electrical substations, to reduce the EMF exposure levels to building occupants located nearby.

We are also agents for well-known EMC equipment manufacturers located around the world and can supply a wide range of specialist EMC test equipment.

As a leading service provider for Electromagnetic Compatibility, we've become the go-to for a wide range of product EMC certification and testing needs.

Compliance Engineering prides itself on delivering the most efficient and cost-effective solution for your compliance testing needs. Drawing on our years of experience, modern test facilities and knowledgeable operators ensures your products adhere to the requirements of current EMC standards.





EMC

EMC Compliance Testing for RCM



Compliance with the Australian EMC regulations is mandatory and standards apply to almost all electronic products supplied to the Australian market. Application of the RCM logo signifies compliance with appropriate Australian EMC standards.

CE Marking & Testing **CE**

CE compliance is required for importing products into the European Union, and is also the basis of compliance for many other international regions. CE compliance includes many directives that may be applicable to each individual product including EMC immunity testing.



Radio Testing

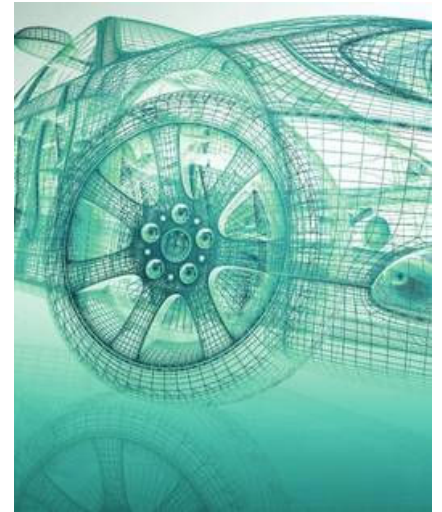
WIFI, WLAN & Bluetooth etc

Low power radio systems are being used in an increasing number of applications around the home and in industry. In Australia low power RF transmitters used for short range applications are categorised by the Australian Communications and Media Authority (ACMA) as Low Interference Potential Devices (LIPD's) with technical compliance requirements detailed in AS/NZS 4268.

Automotive EMC Testing

OEM and aftermarket Device Testing

EMC measurements can be performed on vehicle components in accordance with a vast range of international and vehicle manufacturer specific EMC standards. Measurements include radiated RF emission, radiated RF immunity, transient immunity and electrical supply variations.



Railway & Train Testing

Train component to complete vehicle testing

Compliance Engineering Pty Ltd provide compliance testing for railway applications which includes those standards listed below. Services include EMC, vibration and humidity & temperature testing.



Military EMC Standards

Military component testing

Facilities and equipment are available to perform EMC measurements in accordance with many of the procedures detailed in the following standards:

- MIL-STD-810G
- MIL-STD-1275D
- MIL-STD-202
- MIL-STD-704F
- MIL-STD-461G
- MIL-STD-1399
- MIL-STD-285



Aeronautic EMC Standards

RTCA/DO-160 Testing and Aeronautic EMC Testing

Facilities and equipment are available to perform EMC measurements in accordance with many of the procedures detailed in the following standards:

- RTCA/DO-160D
- RTCA/DO-160E
- RTCA/DO-160F
- RTCA/DO-160G



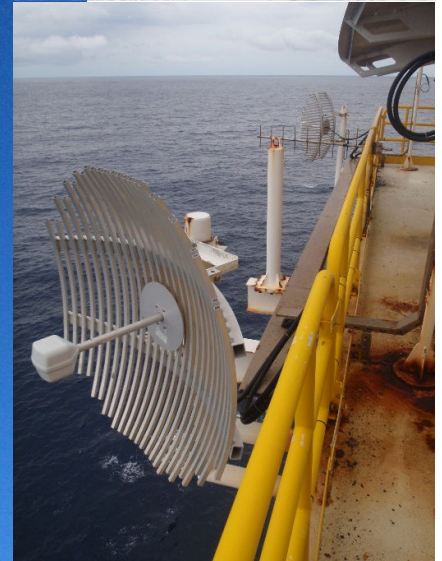
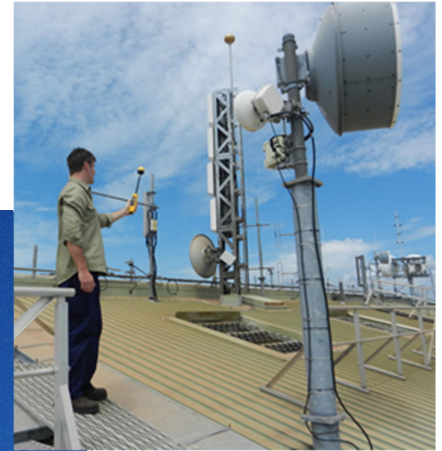
Radiation Hazard Measurement

Compliance Engineering offers a comprehensive range of radiation hazard measurement services and solutions. We specialise in RF radiation hazard measurement, EMR surveys, RADHAZ testing, EME, ELF and EMF shielding solutions.

Compliance Engineering can survey in and around potential electromagnetic radiation sources located at sites all over Australia. A formal test report is provided detailing exclusion zones (as applicable) and recommendations regarding restricting access and or shielding solutions.

Our capabilities include surveys around:

- Mobile Telephone Towers
- HV Power Lines & Electrical Installations
- Communications Systems
- RF welders and induction heaters



Environmental

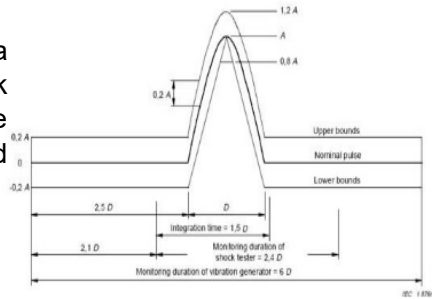


Compliance Engineering are equipped to provide a diverse range of environmental test conditions covering numerous product standards for the Australian and overseas markets. Our broad testing capabilities are further enhanced through our international accreditation, which offers our clients a higher level of confidence.



Shock, Vibration & Bump

Compliance Engineering can simulate a wide range of vibration and shock phenomena, which include sine vibration, random vibration, shock and bump.



Temperature & Humidity Testing

Equipment can be subjected to extreme temperature and humidity tests to ensure reliable operation and accelerate the aging process to identify potential design weaknesses. Test environments can be simulated over the range -70°C to $+180^{\circ}\text{C}$ and up to 99% humidity for extended durations using incrementally or rapidly changing temperatures.

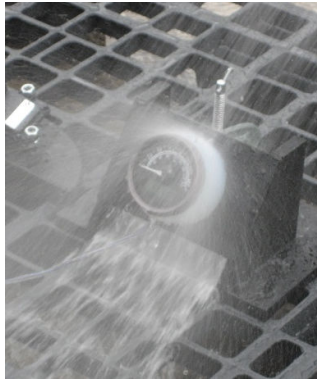
Salt Spray

The salt spray (or salt fog) test is used to check corrosion resistance of materials and surface coatings. The appearance of corrosion is evaluated after a pre-determined period of time.



Ingress Protection

Ingress protection (IP) tests are performed to ensure enclosures provide adequate protection against the environment in which they are located. Tests include ingress of solid foreign objects, water and dust. Measurements are performed according to the procedures of AS 60529 (IEC 60529).



UV & Xenon Arc

Our UVA and Xenon Arc chamber can reproduce the damage caused by sunlight, including temperature, humidity and water spray can also be applied under programmed control.



Flammability Testing

Flammability test methods include Hot Wire, Needle Flame, Bunsen Burner and Oven testing methods.

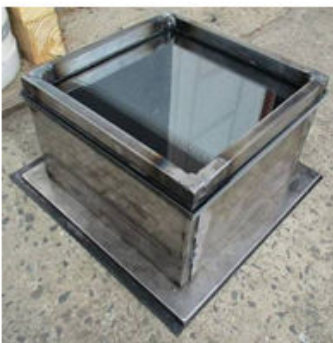


Fire Resistance Testing

Equipment can also be subjected to extreme temperature tests to ensure survivability against fire.

Impact

Impact testing is designed to measure the performance of a device under sudden high rate loading. Compliance Engineering specialise in a wide variety of impact, drop and shock compliance testing services for various devices and components to specific customer requirements:



Accreditation

To demonstrate our commitment to quality and technical competence, Compliance Engineering pursued and obtained accreditation from the American Association for Laboratory Accreditation (A2LA), which is one of the world's most highly respected accreditation organisations.



A2LA and NATA (National Association of Testing Authorities) are both signatories to the ILAC MRA and acceptance testing and calibration results from each organisation are mutually recognised.

Compliance Engineering's Certificate Number: **2829.01**

Compliance Engineering are accredited to perform the following tests on military, automotive sub-components, information technology equipment (ITE), medical electrical equipment, electric motors, various electronic and electrical components/systems:

Contact info

Compliance Engineering is conveniently located in the Melbourne suburb of Keysborough, just off Eastlink.

Compliance Engineering Pty Ltd.
90 Indian Drive,
Keysborough VIC 3173 Australia.
Telephone: + 61 3 9763 3079
E-mail: info@compeng.com.au



For further information please contact Compliance Engineering Pty Ltd on +61 3 9763 3079 or email us at info@compeng.com.au. Please see our full scope of testing capabilities at www.compeng.com.au

