



Medium Performance Power Line Filter for RF Shielded Rooms



TECHNICAL DATA

Rated Voltage	220/380VAC 500VDC
Operating Frequency	50/60Hz
Test Voltage (1 min)	1000VDC (line/line) 1000VDC (line/ground)
Leakage Current	220V/50Hz
Climatic category	25/070/021

Model	Rated Current (A)	Leakage Current \leq (A)	Insertion Loss (Measured in 50 Ω)		Dimension fig
			(Hz) Frequency	(dB) IL (dB)	
DL-15A	15	0.32	0.15M~10G/40G	70~100	1
DL-25A	25	0.32	0.15M~10G/40G	70~100	1
DL-50A	50	0.32	0.15M~10G/40G	70~100	1
DL2X15A	15	0.42	0.15M~10G/40G	70~100	2
DL-2X25A	25	0.46	0.15M~10G/40G	70~100	2
DL-2X1C	1	0.33	14K~10G/40G	100	3
DL-2X3C	3	0.6	14K~10G/40G	100	3
DL-2X6C	6	0.9	14K~10G/40G	100	3
DL-2X20C	20	6.6	14K~10G/40G	100	3
DL-2X30C	30	6.6	14K~10G/40G	100	3

Medium Performance Power Line Filter for RF Shielded Rooms

OUTLINE DRAWING AND DIMENSIONS (mm)

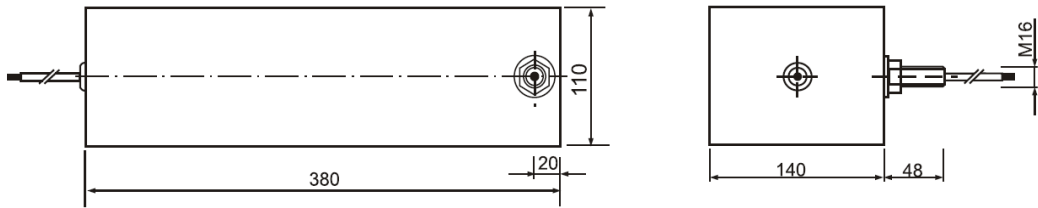


fig.1

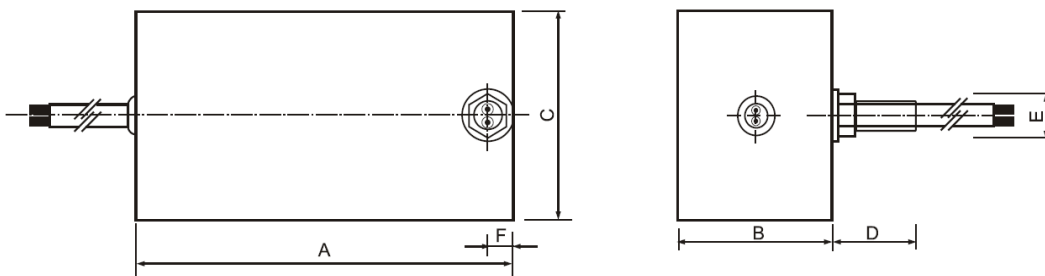


fig.2

Model	A	B	C	D	E	F
DL - 2X15A	220	90	120	42	M16	15
DL - 2X25A						

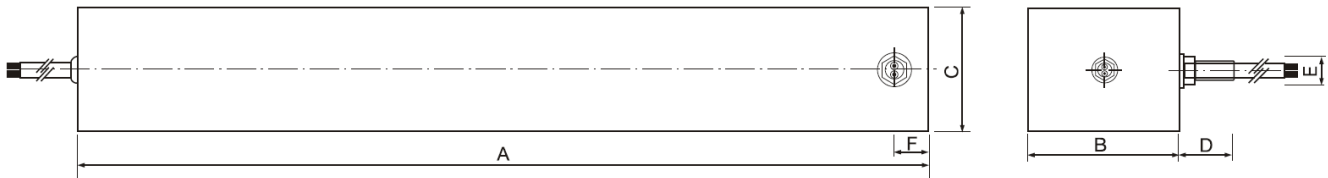


fig.3

Model	A	B	C	D	E	F
DL-2X1C	300	100	150	46	M16	20
DL-2X3C	310	110	160	46	M16	15
DL-2X6C						
DL-2X20C	760	120	200	46	M24	30
DL-2X30C						