



## FPC, FPQ Series



- PCB Mounting, FPQ Connector
- Compact Unit
- Modular Power Supplies & Mimi-Electronic Instruments (DC SIDE)

### TECHNICAL DATA

Rated Voltage 80 VAC

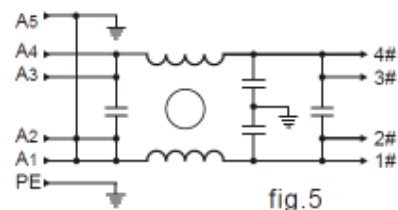
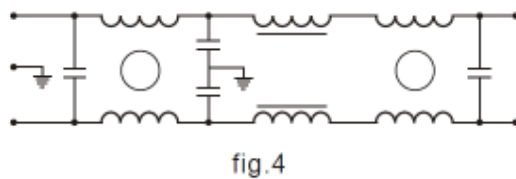
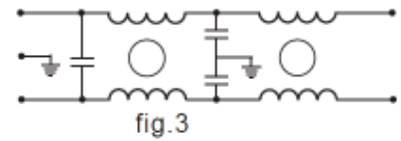
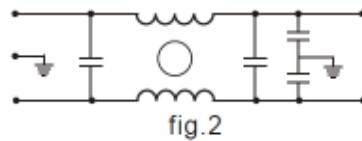
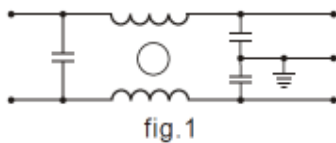
Rated Current 1A-60A

Test Voltage (1min) 500 VDC (line – ground)

Climatic Category 25/085/21

Model	Terminal Input	Terminal Output	Rated Current (A)	Ground Capacitance (nF)	Leakage Current ≤ (mA)	Discharge Resistance (MΩ)	Circuit Diagram fig.	Dimension fig.
DL-2F[C	PCB Pin		2	2.2	-		1	H2
DL-3FP3	PCB Pin		3	33	-		2	H6
DL-5FPC2	PCB Pin		5	4.7	-		3	H7
DL-6FPC	PCB Pin		6	22	-		1	H8
DL-10FPC	PCB Pin		10	33	-		2	H9
DL-10FPC4	PCB Pin		10	4.7	-		4	H10
DL-15FPC1	PCB Pin		15	4.7	-		4	H11
DL-20FPC1	PCB Pin		20	220	-		2	H12
DL-30FPC1	PCB Pin		30	220	-		2	H13
DL-40FPC1	PCB Pin		40	220	-		2	H14
DL-60FPC	PCB Pin		60	3300	-		2	H15
DL-10FPQ	IEC Socket	PCB Pin	10	100	-		2	H16
DL-20FPQ	IEC Socket	PCB Pin	20	100	-		2	H16
DL-50FPQ	IEC Socket	PCB Pin	50	220	-		5	H17

### TYPICAL CIRCUIT DIAGRAM



**INSERTION LOSS**

(50Ω, IEC/CISPR No 17, Measured in 50Ω system, as IEC/CISPR No. 17)

