



EB, EBX Series



- General purpose
- Compact unit, easy to install

TECHNICAL DATA

Rated Voltage	250/440 VAC
Operating Frequency	50/60Hz
Rated Current	5A-200A
Test Voltage (1 min)	1500 VDC (line – line) 2250 VDC (line – ground)
Climatic Category	25/085/21

Model	Terminal		Rated Current (A)	Ground Capacitance (nF)	Discharge Resistance (MΩ)	Circuit Diagram fig.	Dimension fig. See appendix P34
	Input	Output					
5EB	Spade Terminal		5	6.8		1	1
10EB	Spade Terminal		10	6.8		1	1
5EBX1	Wire		5	6.8		1	2
10EBX1	Wire		10	6.8		1	2
15EB3	Threaded Stud		15	6.8		2	3
20EB3	Threaded Stud		20	6.8		2	3
25EB3	Threaded Stud		25	6.8		2	3
30EB3	Threaded Stud		30	6.8		2	3
40EB3	Threaded Stud		40	6.8		2	4
50EB3	Threaded Stud		50	6.8		2	4
100EB1	Threaded Stud		100	50	0.44	3	5
150EB1	Threaded Stud		150	50	0.44	3	5
200EB11	Threaded Stud		200	50	0.44	3	6

TYPICAL CIRCUIT DIAGRAM

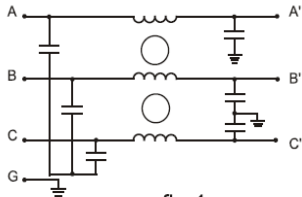


fig.1

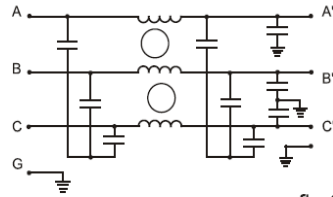


fig.2

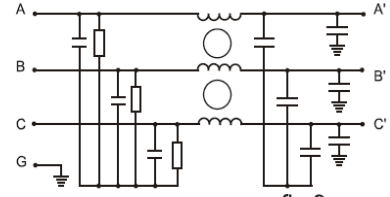


fig.3

OUTLINE DRAWING AND DIMENSIONS (mm)

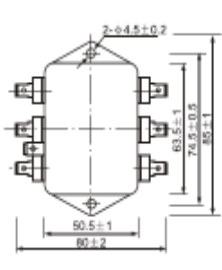


fig.1

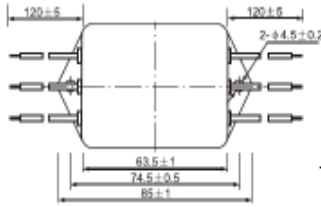


fig.2

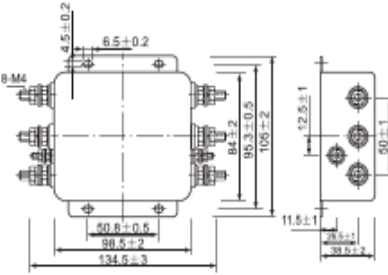


fig.3

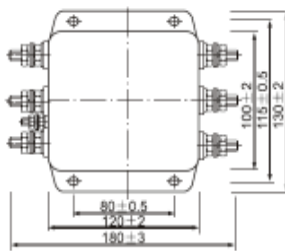


fig.4

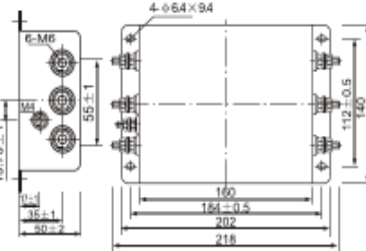


fig.5

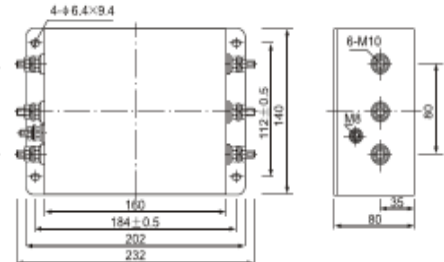
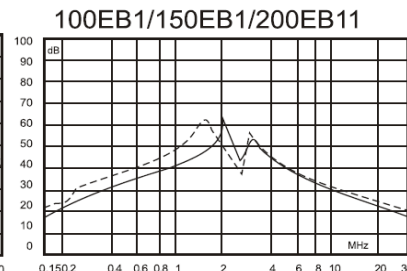
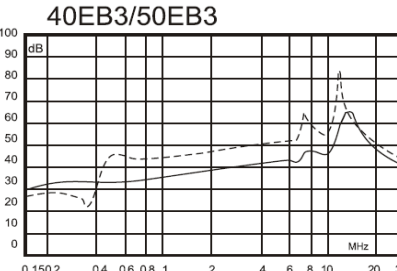
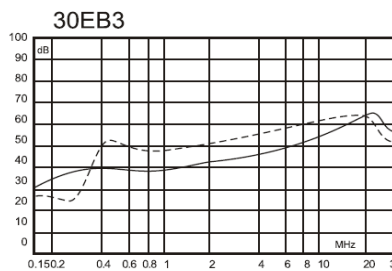
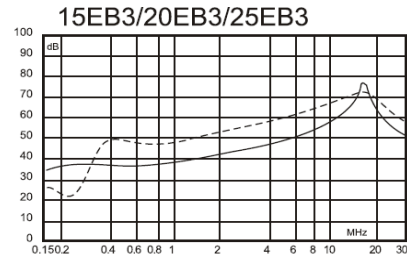
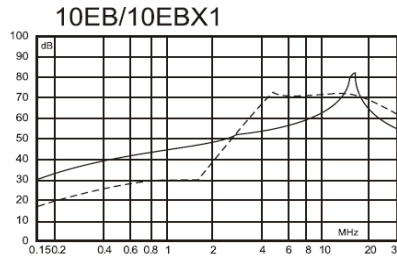
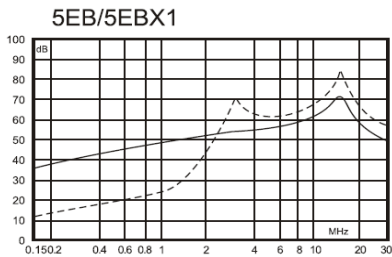


fig.6

INSERTION LOSS

(50Ω, IEC/CISPR No 17, Measured in 50Ω system, as IEC/CISPR No. 17)



— (Common Mode)
 - - - (Differential Mode)