



## DTC, FTC Series



- Compact, High Current
- Provide excellent insertion loss until high frequency
- High reliability and wide temperature environments

### TECHNICAL DATA

Rated Voltage 250 VAC @ 50/60Hz, 80VDC~600VDC

Rated Current 1A-250A

Climatic Category 40/085/56

Model	Rated Voltage (V)	Rated Current (A)	Rated Capacitance (uF)	Leakage Current ≤ (mA)	Test Voltage (1 min)	Circuit Diagram fig.	Dimension fig.
DL-16DTC	250VAC	16	2 X 0.022	4.14	2250VDC	fig. 1	K1
DL-63DTC	250VAC	63	2 X 0.47	88.5	2250VDC	fig. 1	K2
DL-100DTC	250VAC	100	2 X 3.0	564	2120VDC	fig. 1	K3
DL-100DTC3	250VAC	100	2 X 3.0	564	2200VDC	fig. 1	K4
DL-25DTC	250VAC	250	2 X 1.0	157	2250VDC	fig. 1	K5
DL-30FTC1	600VDC	30	2 X 0.018	-	2500VDC	fig. 1	K6
DL-50FTC2	200VDC	50	0.22	-	720VDC	fig. 2	K7
DL-65FTC	200VDC	65	2 X 4.7	-	1000VDC	fig. 1	K8
DL-65FTC3	250VDC	65	2 X 0.25	-	2250VDC	fig. 1	K9
DL-65FTC4	250VDC	65	2 X 0.22	-	2250VDC	fig. 1	K10
DL-230FTC	400VDC	230	2 X 3.3	-	2121VDC	fig. 1	K11
DL-250FTC1	200VDC	250	1.68	-	1500VDC	fig. 2	K12

### TYPICAL CIRCUIT DIAGRAM

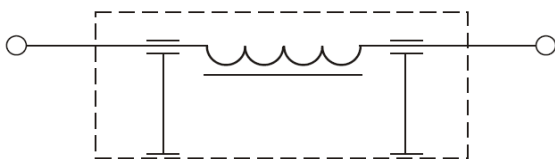


fig.1

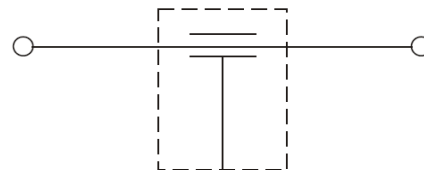
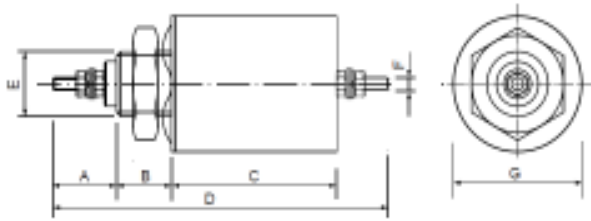


fig.2

## OUTLINE DRAWING AND DIMENSIONS (mm)



	A	B	C	D	E	F	G
K1	20	18	54	110	M20×1	M4	Φ42
K2	26	18	83	148	M30×1.5	M6	Φ50
K3	34	18	83	160	M30×1.5	M8	Φ50
K4	34	15	88	160	M24×1	M8	Φ45
K5	41	16	96	190	M32×1.5	M12	Φ55
K6	24.5	11	45	100	M12×1	M5	Φ20
K7	16	6	21.5	64	M16×1	M6	Φ19
K8	20	10	141	195	M20×1	M6	Φ39
K9	19.5	7	52	100	M18×1	M6	Φ25
K10	19.5	7	44	87.6	M18×1	M6	Φ25
K11	31	16	89	168	M32×1.5	M10	Φ52
K12	32	5	30	88	Φ17	M10	Φ35

## INSERTION LOSS

(50Ω, IEC/CISPR No 17, Measured in 50Ω system, as IEC/CISPR No. 17)

