



TH Series



- High performance filters with differential mode choke
- Low leakage current

TECHNICAL DATA

Rated Voltage 120/250VAC

Operating Frequency 50/60Hz

Rated Current 1A-100A

Test Voltage (1min) 1500VDC (line – line)
1500VAC (line – ground)

Climatic category 25/085/21

Model	Terminal		Rated Current (A)	Ground Capacitance (nF)	Leakage Current ≤ (mA)	Discharge Resistance (MΩ)	Circuit Diagram fig.	Dimension fig.
	Input	Output						
DL-1TH1	Spade Terminal		1	3.3	0.5	1	1	A3
DL-6TH1	Spade Terminal		6	3.3	0.5	1	1	A6
DL-10TH3	Threaded Stud		10	3.3	0.5	1	1	E1
DL-15TH1	Threaded Stud		15	3.3	0.5	1	23	G3
DL-20TH1	Threaded Stud		20	3.3	0.5	1	2	G3
DL-30TH1	Threaded Stud		30	3.3	0.5	1	2	G3
DL-40TH1	Threaded Stud		40	5.0	0.8	0.68	2	G5
DL-100TH1	Threaded Stud		100	6.8	1.0	1	2	G6

TYPICAL CIRCUIT DIAGRAM

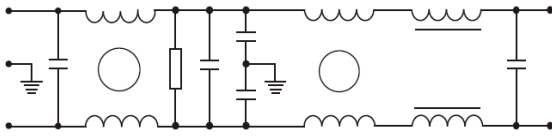


fig.1

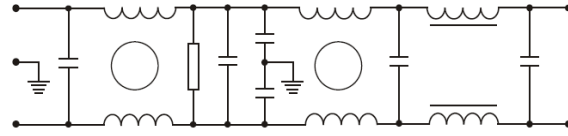


fig.2

INSERTION LOSS

(50Ω, IEC/CISPR No 17, Measured in 50Ω system, as IEC/CISPR No. 17)

