

# TH Series EMC Filters

Compliance Engineering's TH series EMC filters are high performance filters with a differential mode choke. Ideally suited for switch mode power supplies and for low impedance load environments.

Technical Data	
Rated Voltage:	120/250VAC
Operating Frequency:	50/60 Hz
Current Rating:	6A-30A
Test Voltage (1 min):	1500VAC (line to ground)
Climatic Conditions:	25/085/21



Model	Rated Current (A)	Ground Capacitance (nF)	Leakage Current ≤mA	Discharge Resistance (MΩ)	Circuit Diagram Figure	Dimension Figure
6TH1	6	3.3	0.5	1	1	1
10TH3	10	3.3	0.5	1	1	2
15TH1	15	3.3	0.5	1	2	3
20TH1	20	3.3	0.5	1	2	3
30TH1	30	3.3	0.5	1	2	3

**Typical Circuit Diagram**

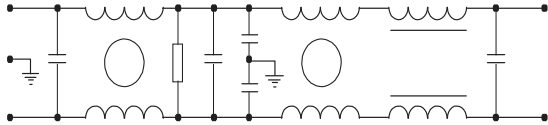


Figure 1.

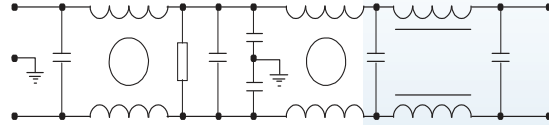


Figure 2.

**Outline Drawings and Dimension (mm)**

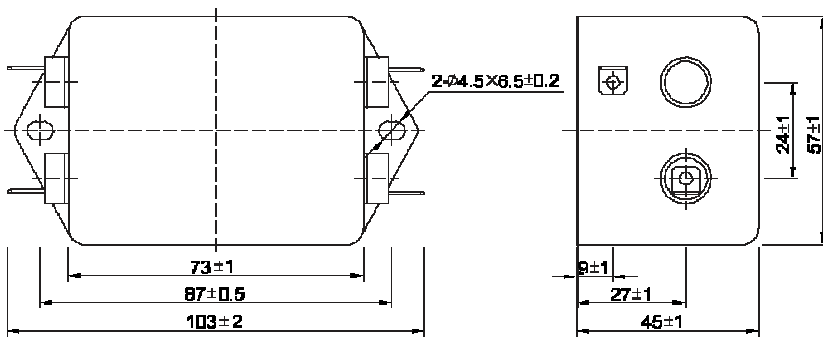


Figure 1.

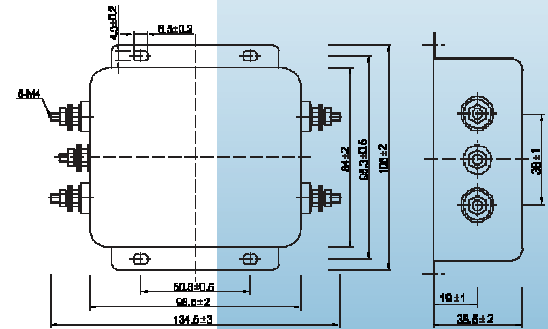


Figure 2.

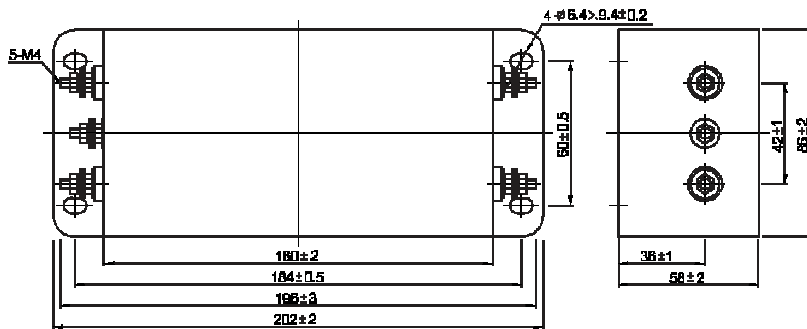


Figure 3.

**Insertion Loss in dB (Measured in 50 Ω system as per IEC/CISPR NO.17)**  
Common Mode ————— Differential Mode - - - - -

