

FTC Series EMC Filters

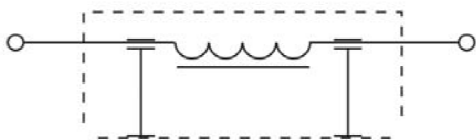
Compliance Engineering's FTC series EMC filters are stud mounting high current DC filters with exceptional insertion loss characteristics.



Technical Data	
Rated Voltage:	125VDC/250VDC
Current Rating:	40A – 200A
Test Voltage (1 min):	2121 VDC (line to ground)
Climatic Category	40 / 085 / 56

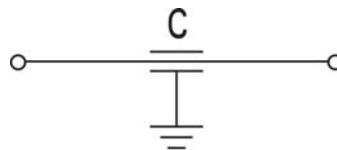
Model	Rated Voltage (VDC)	Rated Current (A)	Rated Capacitance (µF)	Test Voltage (1min)	Circuit Diagram Figure	Dimension Figure
50FTC	250	50	2 x 4.7	2121 VDC	1	2
120FTC	250	120	2 x 3.0	2121 VDC	1	5
230FTC	250	230	2 x 4.7	2121 VDC	1	7
50FTC2	125	50	0.22	1414 VDC	2	8
75FTC	125	75	4	1414 VDC	2	3
50FTC1	125	50	2 x 0.47	1414 VDC	1	1
100FTC	125	100	2 x 0.47	1414 VDC	1	4
200FTC	125	200	2 x 47	1414 VDC	1	6

Typical Circuit Diagram



Circuit 1.

fig



Circuit 2.

Outline Drawings and Dimension (mm)

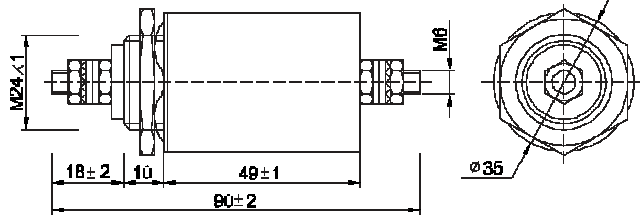


Figure 1.

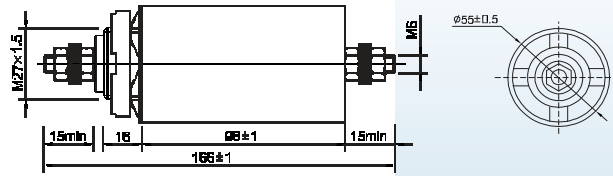


Figure 2.

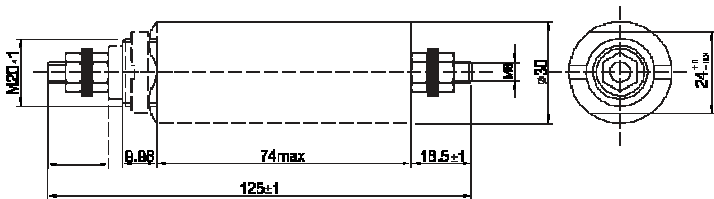


Figure 3.

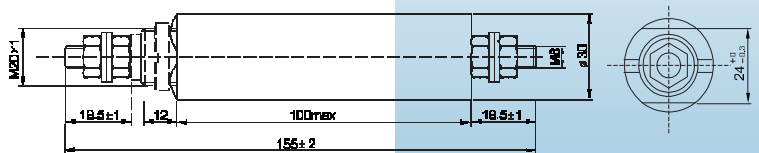


Figure 4.

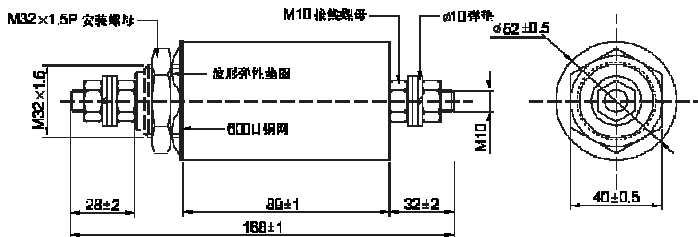


Figure 5.

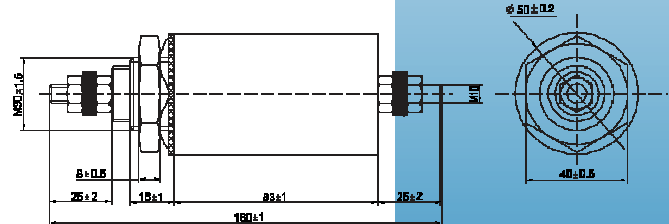


Figure 6.

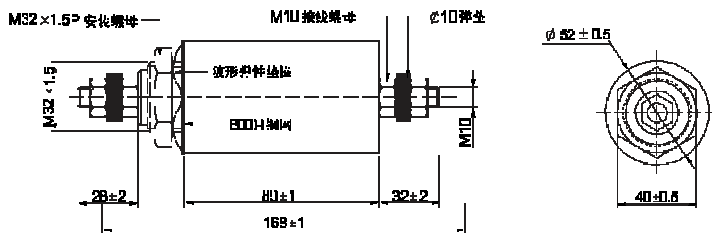


Figure 7.

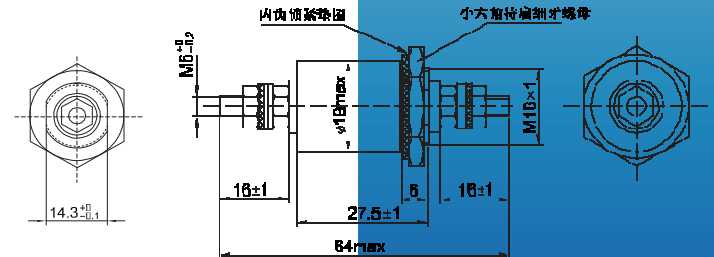


Figure 8.

Insertion Loss in dB (Measured in 50 Ω system as per IEC/CISPR NO.17)
Common Mode ————— Differential Mode - - - - -

