

FK Series EMC Filters

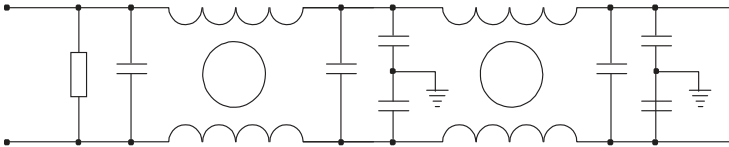
Compliance Engineering's FK series EMC Filters are high performance DC filters with exceptional common and differential mode performance.



Technical Data	
Rated Voltage:	80VDC
Current Rating:	20A – 60A
Test Voltage (1 min):	1414 VDC (line to ground)
Climatic Category	25 / 085 / 21

Model	Rated Current (A)	Ground Capacitance (nF)	Discharge Resistance (MΩ)	Circuit Diagram Figure	Dimension Figure											
20FK1	20	44	1	1	1											
30FK1	30	44	1	1	2											
50FK1	50	440	1	3	50FK1	50	440	1	1	4	60FK1	60	440	1	1	3
50FK1	50	440	1	1	4											
60FK1	60	440	1	1	3											

Typical Circuit Diagram



Circuit 1.

Outline Drawings and Dimension (mm)

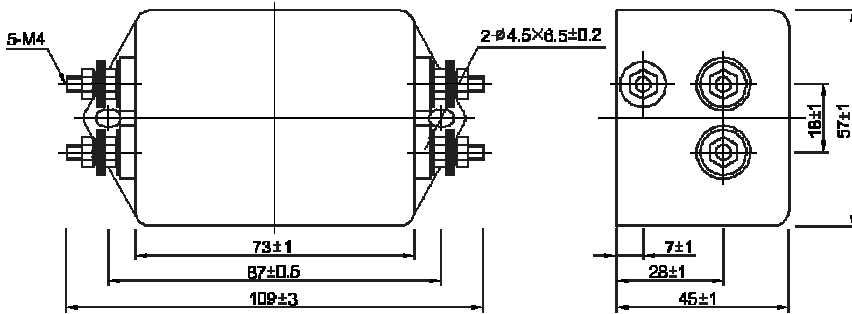


Figure 1.

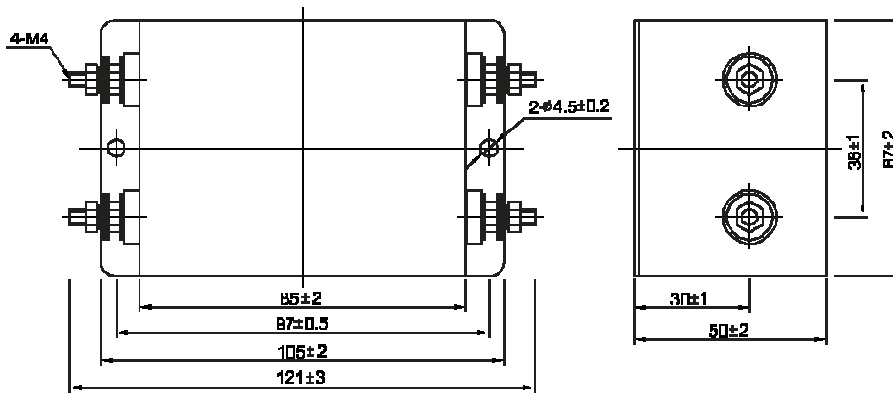


Figure 2.

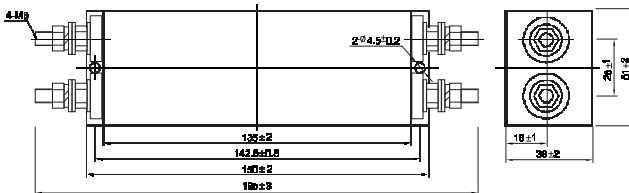


Figure 3.

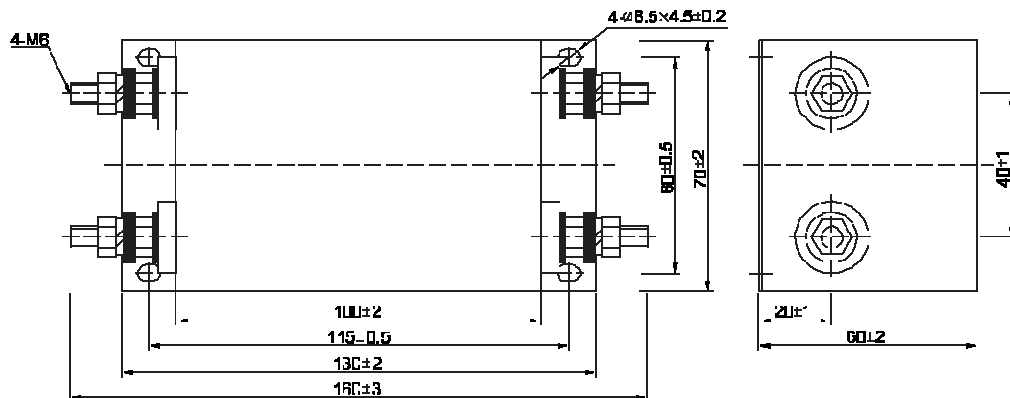


Figure 4.

Insertion Loss in dB (Measured in 50 Ω system as per IEC/CISPR NO.17)
 Common Mode ————— Differential Mode - - - - -

