

EBK5 Series EMC Filters

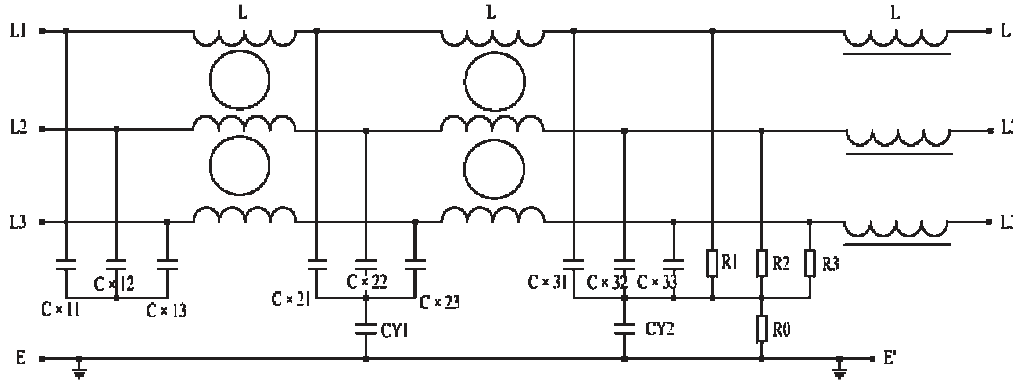
Compliance Engineering's EBK5 series EMC filters are ideally suited as output filters on inverter speed controllers.



Technical Data	
Rated Voltage:	275 / 480VAC
Operating Frequency:	50 / 60 Hz
Current Rating:	5A – 1000A
Test Voltage (1 min):	2250 VDC (line to ground)
Climatic Category	40 / 085 / 21

Model	Rated Current (A)	Ground Capacitance (nF)	Discharge Resistance \geq (M Ω)	Circuit Diagram Figure	Dimension Figure
5EBK5	5	200	1.5 / 0.68	1	1
10EBK5	10	200	1.5 / 0.68	1	1
16EBK5	16	200	1.5 / 0.68	1	1
25EBK5	25	200	1.5 / 0.68	1	1
35EBK5	35	200	1.5 / 0.68	1	1
50EBK5	50	320	1.5 / 0.68	1	1
65EBK5	65	320	1.5 / 0.68	1	1
80EBK5	80	320	1.5 / 0.68	1	1
100EBK5	100	320	1.5 / 0.68	1	1
130EBK5	130	690	1.5 / 0.68	1	1
160EBK5	160	690	1.5 / 0.68	1	1
200EBK5	200	690	1.5 / 0.68	1	1
250EBK5	250	690	1.5 / 0.68	1	2
320EBK5	320	940	1.5 / 0.68	1	2
400EBK5	400	940	1.5 / 0.68	1	2
600EBK5	600	940	1.5 / 0.68	1	2
1000EBK5	1000	940	1.5 / 0.68	1	2

Typical Circuit Diagram



Circuit 1.

Outline Drawings and Dimension (mm)

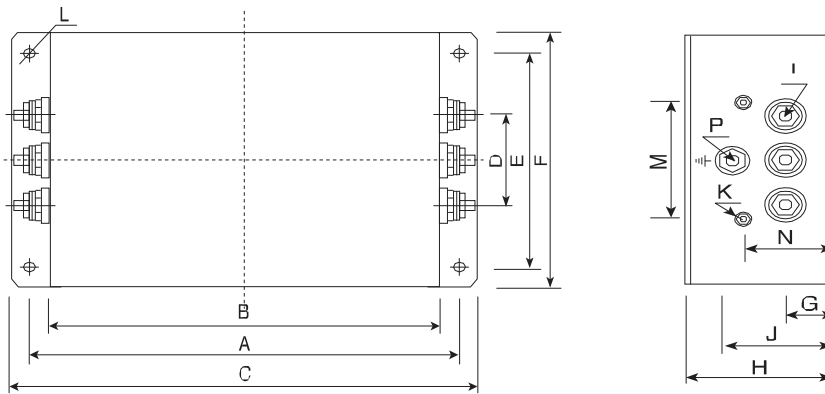


Figure 1.

Model	A (mm)	B (mm)	C (mm)	D (mm)	E (mm)	F (mm)	G (mm)	H (mm)	I (mm)	J (mm)	k (mm)	M (mm)	N (mm)	P (mm)	L (mm)
5EBK5	184	160	202		60	86		58			-	-	-		6.4x9.4
10EBK5	184	160	202		60	86		58			-	-	-		6.4x9.4
16EBK5	184	160	202		60	86		58			-	-	-		6.4x9.4
25EBK5	243	224	265	58	70	102	25	92	M6	58	M4	74	49	M6	6.4x9.4
35EBK5	243	224	265	58	70	102	25	92	M6	58	M4	74	49	M6	6.4x9.4
50EBK5	243	224	265	58	70	102	25	92	M6	58	M4	74	49	M6	6.4x9.4
65EBK5	243	224	265	58	70	102	25	92	M6	58	M4	74	49	M6	6.4x9.4
80EBK5	354	323	388	66	155	188	30	92	M8	62	M4	86	56	M8	6.4x9.4
100EBK5	354	323	388	66	155	188	30	92	M8	62	M4	86	56	M8	6.4x9.4
130EBK5	354	323	388	66	155	188	30	92	M8	62	M4	86	56	M8	6.4x9.4
160EBK5	354	323	388	66	155	188	30	92	M8	62	M4	86	56	M8	6.4x9.4
200EBK5	354	323	388	66	155	188	30	92	M8	62	M4	86	56	M8	6.4x9.4