

# EBK1 & EBK3 Series EMC Filters

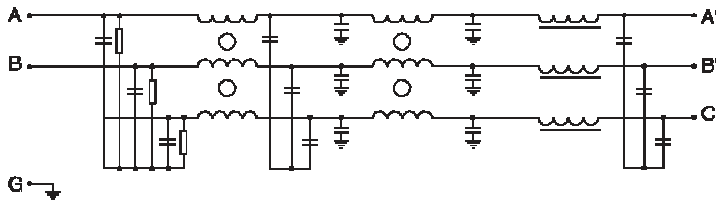
Compliance Engineering's EBK1 & EBK3 series EMC filters are ideally suited for inverter speed control systems. These filters offer superior common and differential mode performance with their 3 stage filtering and are available in large current ratings.



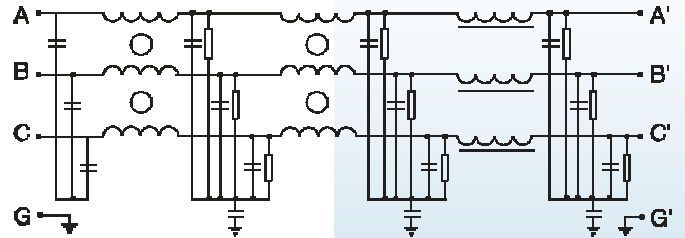
Technical Data	
Rated Voltage:	250 / 440VAC
Operating Frequency:	50 / 60 Hz
Current Rating:	100A – 600A
Test Voltage (1 min):	2250 VDC (line to ground)
Climatic Category	40 / 085 / 21

Model	Rated Current (A)	Ground Capacitance (nF)	Discharge Resistance (kΩ)	Circuit Diagram Figure	Dimension Figure
100EBK1	100	100	220	1	1
150EBK1	150	100	220	1	1
200EBK1	200	100	220	1	2
300EBK3	300	2.1μF	660	2	3
400EBK3	400	2.1μF	660	2	3
600EBK3	600	2.1μF	660	2	3

**Typical Circuit Diagram**

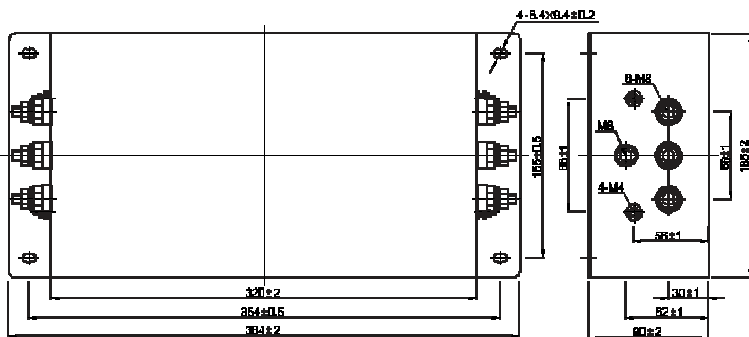


**Circuit 1.**

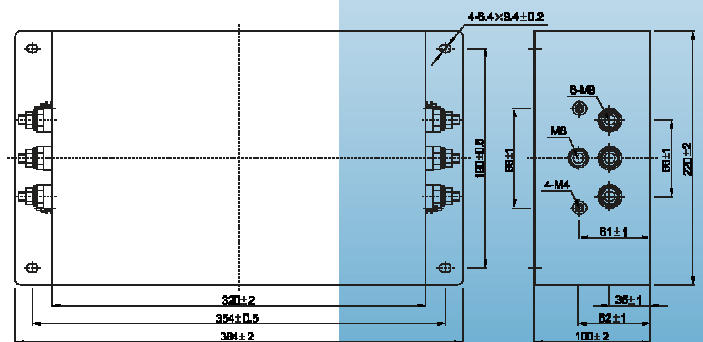


**Circuit 2.**

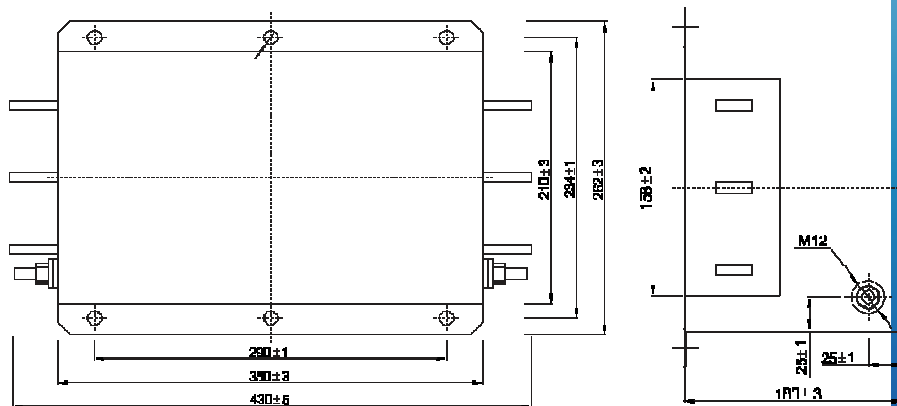
**Outline Drawings and Dimension (mm)**



**Figure 1.**



**Figure 2.**



**Figure 3.**

**Insertion Loss in dB (Measured in 50 Ω system as per IEC/CISPR NO.17)**

**Common Mode** ————— **Differential Mode** - - - - -

