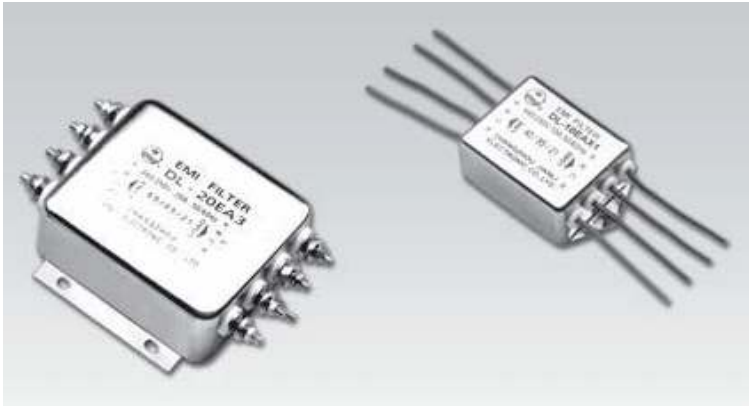


EA Series EMC Filters

Compliance Engineering's EA series EMC filters are a general purpose filter, ideal for both balanced and unbalanced three phase loads.

Technical Data	
Rated Voltage:	250 / 440 VAC
Operating Frequency:	50 / 60 Hz
Current Rating:	5A – 150A
Test Voltage (1 min):	2250 VDC (line to ground)
Climate Category	25 / 085 /21



Model	Rated Current (A)	Ground Capacitance (nF)	Leakage Current ≤ (mA)	Discharge Resistance (MΩ)	Circuit Diagram Figure	Dimension Figure
5EA	5	6.8	0.5	-	1	1
10EA	10	6.8	0.5	-	1	1
5EAX1	5	6.8	0.5	-	1	2
10EAX1	10	6.8	0.5	-	1	2
15EA3	15	6.8	0.5	-	2	5
20EA3	20	6.8	0.5	-	2	5
25EA3	25	6.8	0.5	-	2	5
30EA3	30	6.8	0.5	-	2	5
40EA3	40	10	0.5	2	2	6
50EA3	50	10	0.5	2	2	6
80EA1	80	10	0.5	2	2	3
100EA1	100	13.6	0.5	0.44	2	4
150EA1	150	200	0.5	0.44	2	3

Typical Circuit Diagram

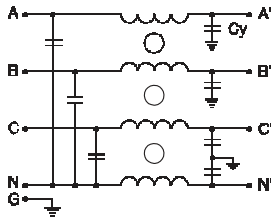


Figure 1.

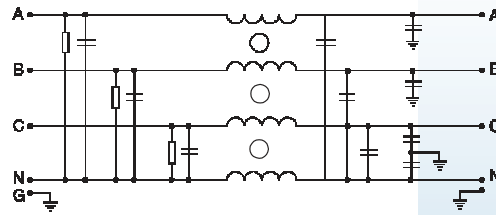


Figure 2.

Outline Drawings and Dimension (mm)

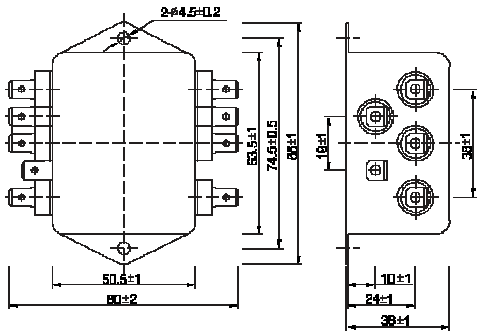


Figure 1.

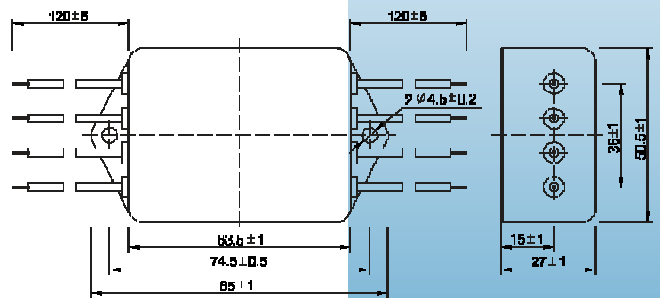


Figure 2.

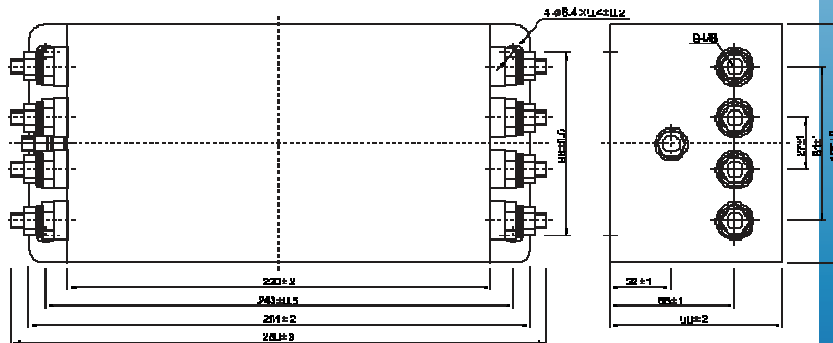


Figure 3.

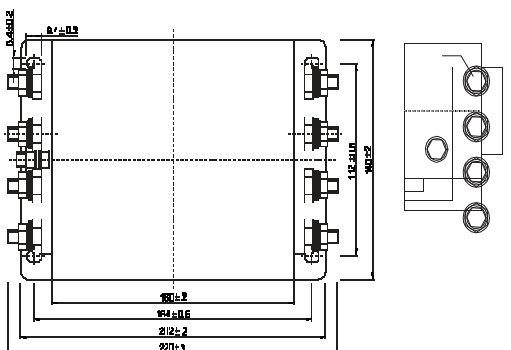


Figure 4.

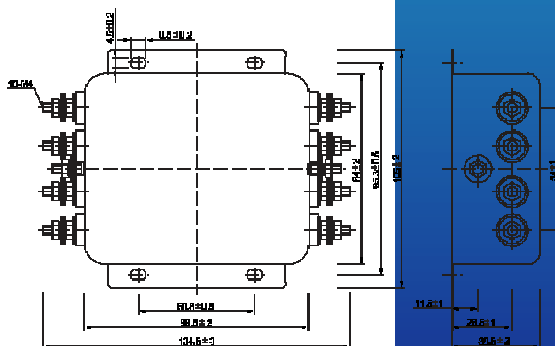


Figure 5.

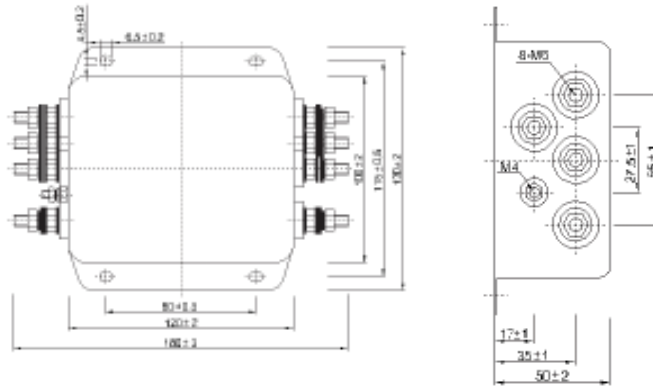


Figure 6.

Insertion Loss in dB (Measured in 50 Ω system as per IEC/CISPR NO.17)

Common Mode ————— **Differential Mode** - - - - -

