

# EAK Series EMC Filters

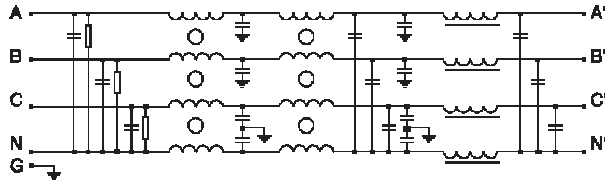
Compliance Engineering's EAK series EMC filters are for 3 phase high current applications requiring high attenuation. These filters provide excellent performance in both common and differential modes.

Technical Data	
Rated Voltage:	250 / 440 VAC
Operating Frequency:	50 / 60 Hz
Current Rating:	50A – 600A
Test Voltage (1 min):	2250 VDC (line to ground)
Climate Category	40 / 085 /21

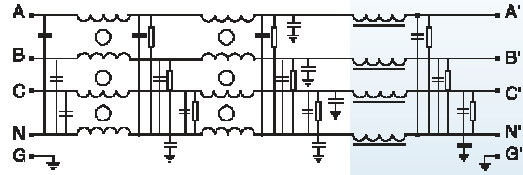


Model	Rated Current (A)	Ground Capacitance (nF)	Leakage Current ≤ (mA)	Discharge Resistance (kΩ)	Circuit Diagram Figure	Dimension Figure
50EAK1	50	94	0.5	440	1	1
80EAK1	80	200	0.5	440	1	1
100EAK1	100	200	0.5	440	1	1
150EAK1	150	200	0.5	440	1	1
300EAK3	300	2.4μF	0.5	660/330	2	2
400EAK3	400	2.4μF	0.5	660/330	2	2
600EAK3	600	2.4μF	0.5	660/330	2	2

**Typical Circuit Diagram**

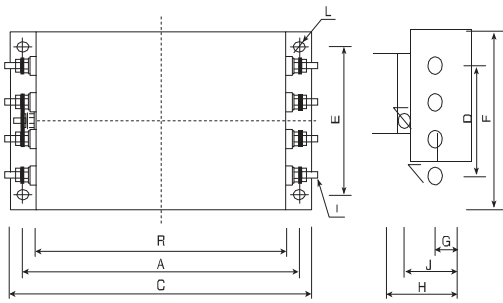


**Circuit 1.**

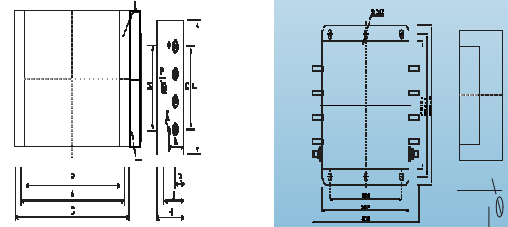


**Circuit 2.**

**Outline Drawings and Dimension (mm)**



**Figure 1.**



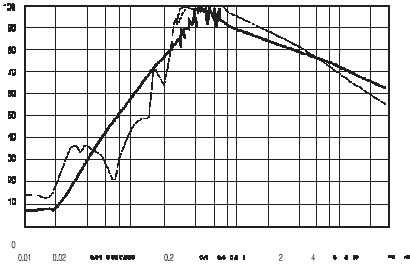
**Figure 2.**

Model	A (mm)	B (mm)	C (mm)	D (mm)	E (mm)	F (mm)	G (mm)	H (mm)	I (mm)	J (mm)	K (mm)	M (mm)	N (mm)	P (mm)	L (mm)
50EAK1	243	220	261	81	96	125	25	90	M6	58	M4	74	49	M6	6.4X9.4
80EAK1	354	320	384	99	155	185	30	90	M8	62	M4	86	56	M8	6.4X9.4
100EAK1	354	320	384	99	155	185	30	90	M8	62	M4	86	56	M8	6.4X9.4
150EAK1	354	320	384	99	190	220	35	100	M8	62	M4	86	61	M8	6.4X9.4

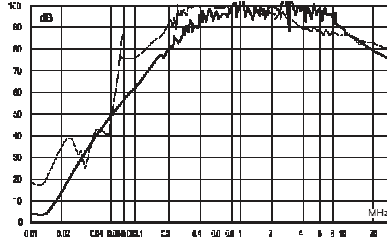
**Insertion Loss in dB (Measured in 50 Ω system as per IEC/CISPR NO.17)**

**Common Mode** ————— **Differential Mode** - - - - -

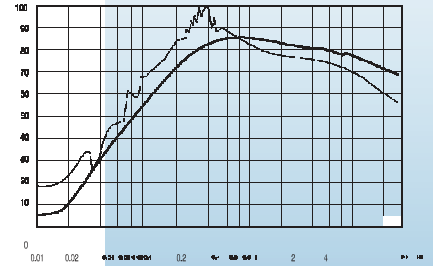
**50EAK1**



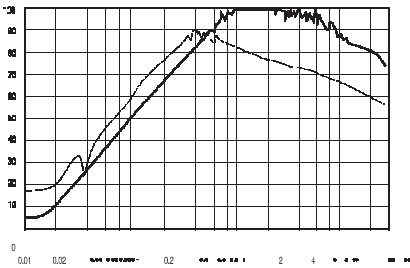
**80EAK1**



**100EAK1**



**150EAK1**



**300EAK3/400EAK3/600EAK3**

