

# DZ Series EMC Filter

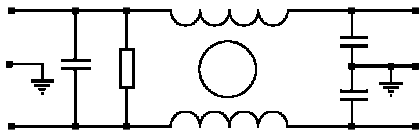
Compliance Engineering's DZ series EMC filters are general purpose filters with an IEC connector designed for space saving applications.



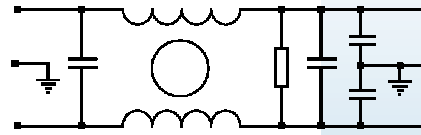
Technical Data	
Rated Voltage:	250VAC
Operating Frequency:	50 / 60 Hz
Current Rating:	1A – 16A
Test Voltage (1 min):	1500 VAC (line to ground)
Climate Category	25 / 085 / 21

Model	Rated Current (A)	Ground Capacitance (nF)	Leakage Current ≤ (mA)	Discharge Resistance (MΩ)	Circuit Diagram Figure	Dimension Figure
1DZ1	1	2.2	0.5	-	1	1
3DZ2	3	3.3	0.5	-	1	1
6DZ2	6	3.3	0.5	-	1	1
10DZ2	10	4.7	0.5	-	1	1
1DZX2	1	2.2	0.5	1	1	2
1DZX	1	2.2	0.5	-	1	2
3DZX	3	3.3	0.5	-	1	2
6DZX	6	3.3	0.5	-	1	2
3DZB21	3	4.7	0.5	1.5	2	3
6DZB21	6	4.7	0.5	1.5	2	3
10DZB21	10	3.3	0.5	1.5	2	4
15DZB2	15	3.3	0.5	1.5	2	5
16DZB2	16	10	0.5	0.225	1	6

**Typical Circuit Diagram**

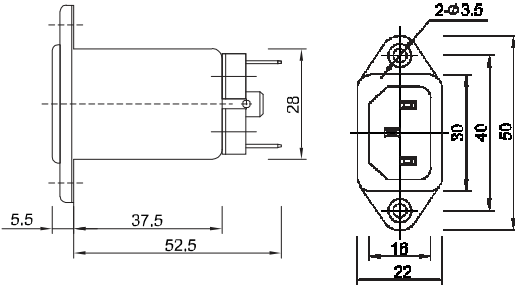


**Circuit 1.**

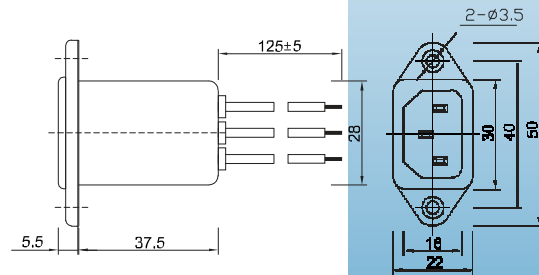


**Circuit 2.**

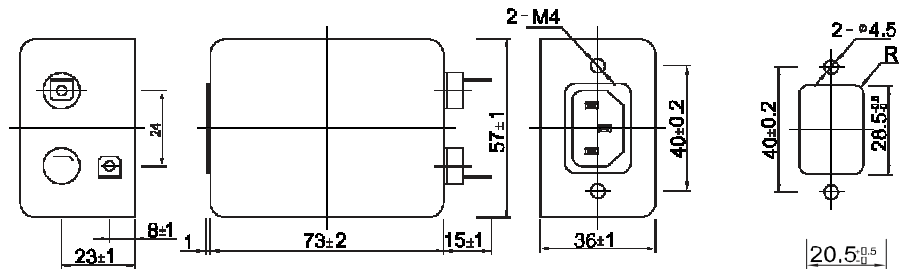
**Outline Drawings and Dimension (mm)**



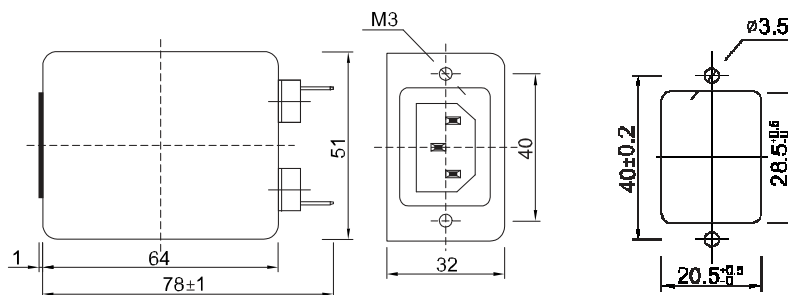
**Figure 1.**



**Figure 2.**



**Figure 3.**



**Figure 4.**

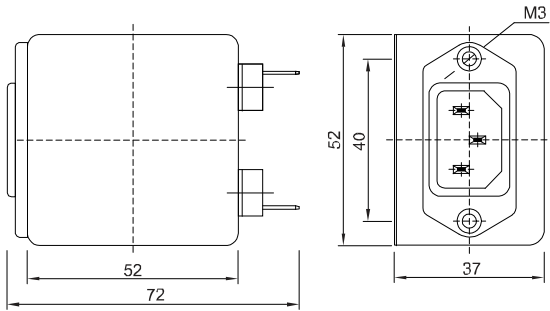


Figure 5.

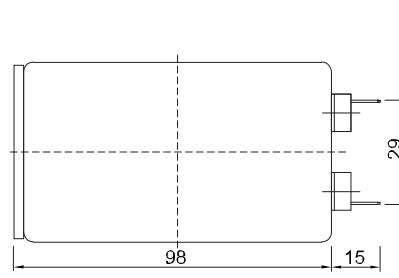


Figure 6.

**Insertion Loss in dB (Measured in 50 Ω system as per IEC/CISPR NO.17)**

**Common Mode** ————— **Differential Mode** - - - - -

