

# DZ2 Series EMC Filters

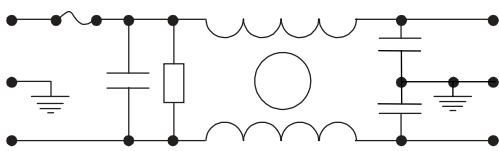
Compliance Engineering's DZ2 filter series are fitted with IEC connectors and are fused for space saving applications. They can also be available in configurations containing a mains switch.



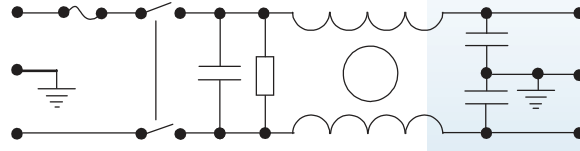
Technical Data	
Rated Voltage:	250VAC
Operating Frequency:	50 / 60 Hz
Current Rating:	1A – 10A
Test Voltage (1 min):	1500 VAC (line to ground)
Climate Category	25 / 085 / 21

Model	Rated Current (A)	Ground Capacitance (nF)	Leakage Current ≤ (mA)	Discharge Resistance (MΩ)	Circuit Diagram Figure	Dimension Figure
1DZ2R	1	2.2	0.5	1	1	1
3DZ2R	3	2.2	0.5	1	1	1
6DZ2R	6	2.2	0.5	1	1	1
10DZ2R	10	2.2	0.5	1	1	1
1DZ2KR	1	2.2	0.5	1	2	2
3DZ2KR	3	2.2	0.5	1	2	2
6DZ2KR	6	2.2	0.5	1	2	2
10DZ2KR	10	2.2	0.5	1	2	2

**Typical Circuit Diagram**

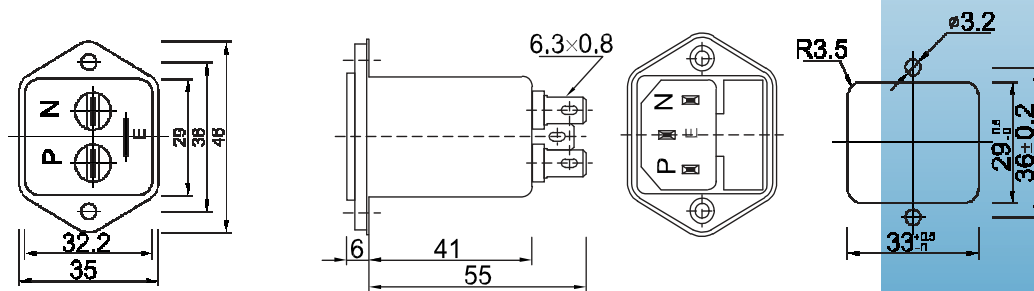


**Circuit 1.**

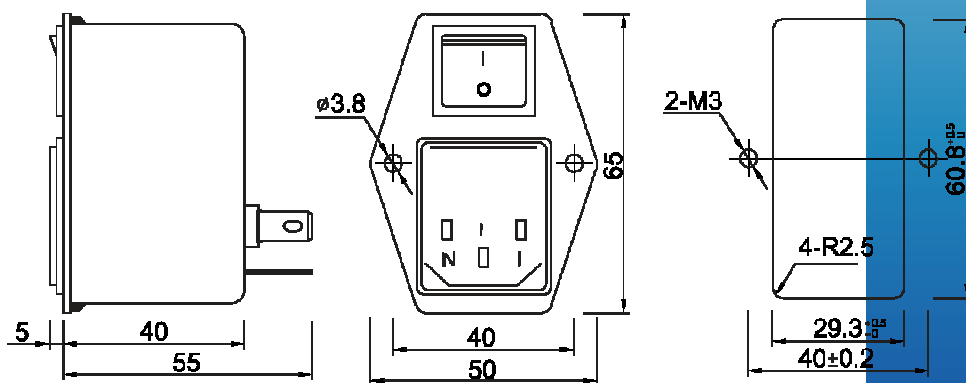


**Circuit 2.**

**Outline Drawings and Dimension (mm)**



**Figure 1.**



**Figure 2.**

**Insertion Loss in dB (Measured in 50 Ω system as per IEC/CISPR NO.17)**

**Common Mode** ————— **Differential Mode** - - - - -

