

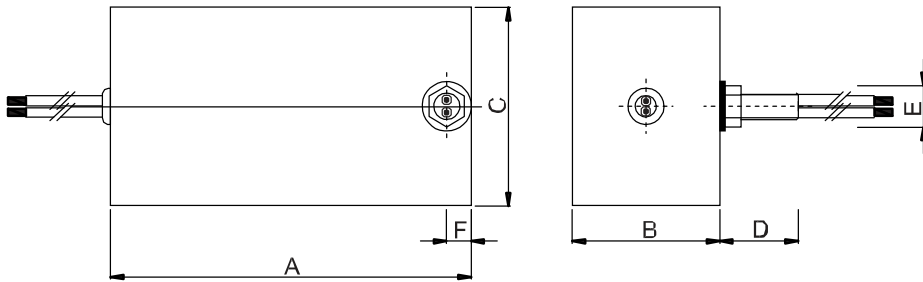
# AB Series EMC Filter

Compliance Engineering's AB series of EMC filters are suitable for large capacity industrial installations, general purpose RF shielded enclosures and installations using VSD's. The filters are bulkhead mounted and have good saturation tolerance

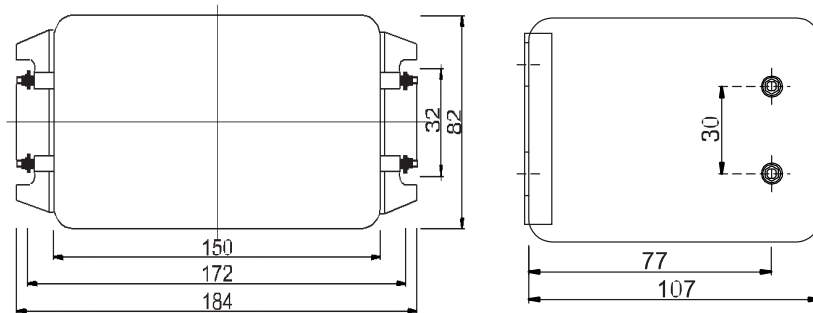
Technical Data	
<b>Rated Voltage:</b>	220 / 380VAC 500VDC
<b>Operating Frequency:</b>	50 / 60 Hz
<b>Test Voltage (1 min):</b>	1000 VDC
<b>Leakage Current:</b>	Measured with 220 V / 50 Hz
<b>Climate Category</b>	25 / 070 /21



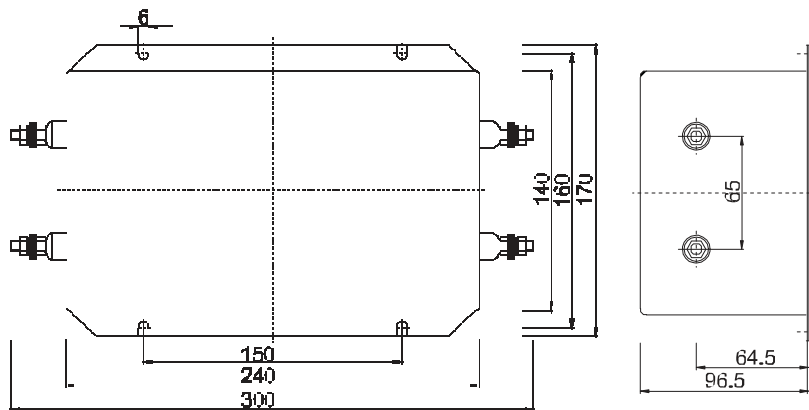
Model	Rated Current (A)	Leakage Current ≤ (A)	Frequency (MHz)	Insertion Loss (dB)	Figure
3A	3	0.14	0.4 – 30	60	2
5A	5	0.47	0.1 – 30	80	3
15A	15	0.32	0.15 – 10G	70 ~ 100	4
25A	25	0.32	0.15 – 10G	70 ~ 100	4
50A	50	0.32	0.15 – 10G	70 ~ 100	4
80A	80	0.32	0.15 – 10G	60 ~ 100	1
100A	100	0.47	0.15 – 10G	70 ~ 100	5
200A	200	0.64	0.15 – 10G	70 ~ 100	6
2X15A	15	0.42	0.15 – 10G	70 ~ 100	1
2X25A	25	0.46	0.15 – 10G	70 ~ 100	1
15B	15	0.56	0.1 – 10G	100	1
25B	25	0.56	0.1 – 10G	100	1



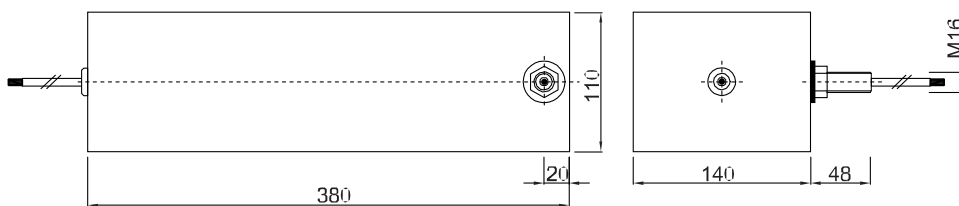
**Figure 1.**



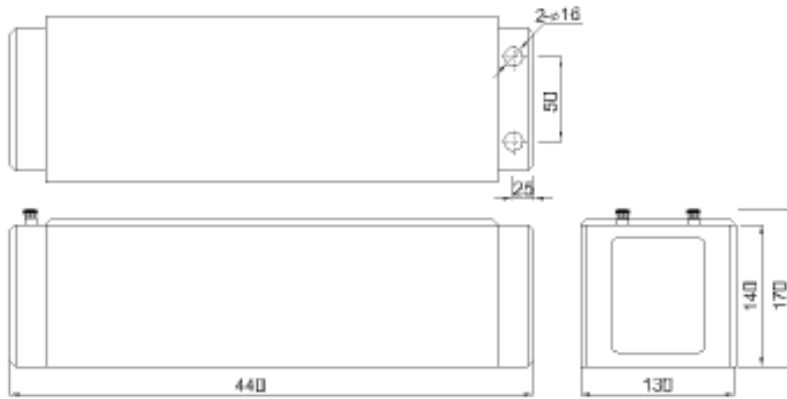
**Figure 2.**



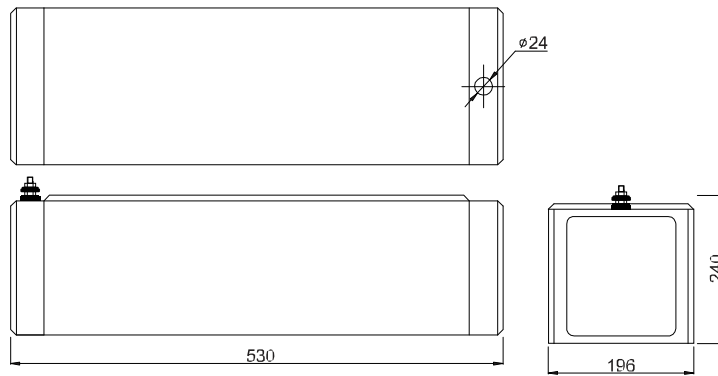
**Figure 3.**



**Figure 4.**



**Figure 5.**



**Figure 6.**

Model	A (mm)	B (mm)	C (mm)	D (mm)	E (mm)	F (mm)
<b>2X15A</b>	220	90	120	42	M16	15
<b>2X25A</b>	220	90	120	42	M16	15
<b>80A</b>	530	186	196	48	M24	30
<b>15B</b>	690	140	110	48	M16	30
<b>25B</b>	690	140	110	48	M16	30